

For Research Use Only

KRT6B Recombinant antibody, PBS Only (Capture)

Catalog Number: 85423-6-PBS



Basic Information

Catalog Number: 85423-6-PBS	GenBank Accession Number: BC034535	Purification Method: Protein A purification
Size: 100ug , Concentration: 1 mg/ml by Nanodrop;	GeneID (NCBI): 3854	CloneNo.: 242874D7
Source: Rabbit	UNIPROT ID: P04259	
Isotype: IgG	Full Name: keratin 6B	
Immunogen Catalog Number: AG11288	Calculated MW: 564 aa, 60 kDa	

Applications

Tested Applications:
Sandwich ELISA, Indirect ELISA, Sample test

Species Specificity:
human

Product Information

85423-6-PBS targets KRT6B as part of a matched antibody pair:

MP01943-2: 85423-6-PBS capture and 85423-5-PBS detection (validated in Sandwich ELISA)

Unconjugated rabbit recombinant monoclonal antibody in PBS only (BSA and azide free) storage buffer at a concentration of 1 mg/mL, ready for conjugation. Created using Proteintech's proprietary in-house recombinant technology. Recombinant production enables unrivalled batch-to-batch consistency, easy scale-up, and future security of supply.

This conjugation ready format makes antibodies ideal for use in many applications including: ELISAs, multiplex assays requiring matched pairs, mass cytometry, and multiplex imaging applications. Antibody use should be optimized by the end user for each application and assay.

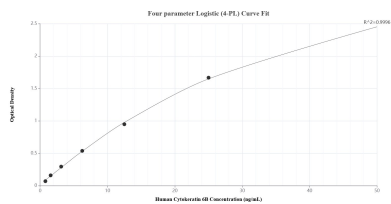
Storage

Storage:
Store at -80°C.
Storage Buffer:
PBS Only

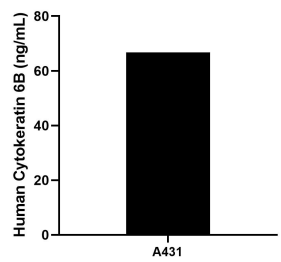
For technical support and original validation data for this product please contact:
T: 1 (888) 4PTGLAB (1-888-478-4522) (toll free in USA), or 1(312) 455-8498 (outside USA)
E: proteintech@ptglab.com
W: ptglab.com

This product is exclusively available under Proteintech Group brand and is not available to purchase from any other manufacturer.

Selected Validation Data



Sandwich ELISA standard curve of MP01943-2, Human Cytokeratin 6B Recombinant Matched Antibody Pair - PBS only. 85423-6-PBS was coated to a plate as the capture antibody and incubated with serial dilutions of standard Ag11288. 85423-5-PBS was HRP conjugated as the detection antibody. Range: 0.781-50 ng/mL



The mean Cytokeratin 6B concentration was determined to be 66.72 ng/mL in A431 cell extract based on a 3.70 mg/mL extract load.