

For Research Use Only

DcR2 Recombinant antibody

Catalog Number: 85425-2-RR



Basic Information

Catalog Number:

85425-2-RR

Size:

100ul, Concentration: 1000 µg/ml by Nanodrop;

Source:

Rabbit

Isotype:

IgG

Immunogen Catalog Number:

EG3487

GenBank Accession Number:

NM_003840.5

GeneID (NCBI):

8793

UNIPROT ID:

Q9UBN6

Full Name:

tumor necrosis factor receptor superfamily, member 10d, decoy with truncated death domain

Calculated MW:

42 kDa

Observed MW:

50-55 kDa

Purification Method:

Protein A purification

CloneNo.:

242916C11

Recommended Dilutions:

WB: 1:500-1:2000

Applications

Tested Applications:

WB, ELISA

Species Specificity:

human, mouse, rat

Positive Controls:

WB : human kidney tissue, mouse liver tissue, rat liver tissue

Background Information

Decoy receptor 2 (DcR2) is a member of the tumor necrosis factor receptor (TNFR) superfamily. It functions as a decoy receptor for TNF-related apoptosis-inducing ligand (TRAIL), thereby inhibiting TRAIL-mediated apoptosis (PMID: 15538968; 9537512). It has been considered a tentative marker of cellular senescence (PMID: 16079833; 22751116). Additionally, DCR2 has been implicated in the regulation of renal fibrosis and cell senescence, contributing to the pathogenesis of diabetic nephropathy (PMID: 35661704).

Storage

Storage:

Store at -20°C. Stable for one year after shipment.

Storage Buffer:

PBS with 0.02% sodium azide and 50% glycerol, pH7.3

Aliquoting is unnecessary for -20°C storage

*** 20ul sizes contain 0.1% BSA

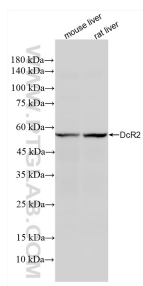
For technical support and original validation data for this product please contact:

T: 1 (888) 4PTGLAB (1-888-478-4522) (toll free in USA), or 1(312) 455-8498 (outside USA)

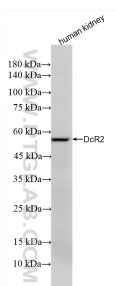
E: proteintech@ptglab.com
W: ptglab.com

This product is exclusively available under Proteintech Group brand and is not available to purchase from any other manufacturer.

Selected Validation Data



Various lysates were subjected to SDS PAGE followed by western blot with 85425-2-RR (DcR2 antibody) at dilution of 1:1000 incubated at room temperature for 1.5 hours.



Human kidney lysate was subjected to SDS PAGE followed by western blot with 85425-2-RR (DcR2 antibody) at dilution of 1:1000 incubated at room temperature for 1.5 hours.