

For Research Use Only

# ALDH1B1 Recombinant monoclonal antibody

Catalog Number: 85426-2-RR



## Basic Information

<b>Catalog Number:</b> 85426-2-RR	<b>GenBank Accession Number:</b> BC001619	<b>Purification Method:</b> Protein A purification
<b>Size:</b> 100ul , Concentration: 650 µg/ml by Nanodrop;	<b>GeneID (NCBI):</b> 219	<b>CloneNo.:</b> 242944E7
<b>Source:</b> Rabbit	<b>UNIPROT ID:</b> P30837	<b>Recommended Dilutions:</b> WB: 1:5000-1:50000 IHC: 1:500-1:2000
<b>Isotype:</b> IgG	<b>Full Name:</b> aldehyde dehydrogenase 1 family, member B1	
<b>Immunogen Catalog Number:</b> AG7144	<b>Calculated MW:</b> 57 kDa	
	<b>Observed MW:</b> 50-55 kDa	

## Applications

<b>Tested Applications:</b> WB, IHC, ELISA	<b>Positive Controls:</b>
<b>Species Specificity:</b> human, mouse, rat	<b>WB :</b> HepG2 cells, K-562 cells, mouse brain tissue, rat brain tissue
<b>Note-IHC: suggested antigen retrieval with TE buffer pH 9.0; (*) Alternatively, antigen retrieval may be performed with citrate buffer pH 6.0</b>	<b>IHC :</b> mouse testis tissue, mouse brain tissue

## Background Information

Aldehyde dehydrogenases (ALDHs) belong to a superfamily of NAD(P)+-dependent enzymes, which catalyze the oxidation of endogenous and exogenous aldehydes to their corresponding acids. ALDH1B1 is a mitochondrial ALDH that is dramatically upregulated in human colonic adenocarcinoma, making it a potential biomarker for human colon cancer.(PMID:21216231). ALDH1B1 is a homotetramer expressed in various adult and fetal human tissues including liver, testis, kidney, skeletal muscle, heart, placenta, brain and lung(PMID:18611112).

## Storage

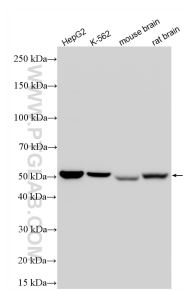
**Storage:**  
Store at -20°C. Stable for one year after shipment.  
**Storage Buffer:**  
PBS with 0.02% sodium azide and 50% glycerol, pH7.3  
**Aliquoting is unnecessary for -20°C storage**

\*\*\* 20ul sizes contain 0.1% BSA

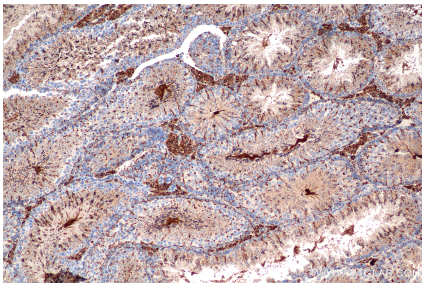
For technical support and original validation data for this product please contact:  
T: 1 (888) 4PTGLAB (1-888-478-4522) (toll free in USA), or 1(312) 455-8498 (outside USA)  
E: proteintech@ptglab.com  
W: ptglab.com

This product is exclusively available under Proteintech Group brand and is not available to purchase from any other manufacturer.

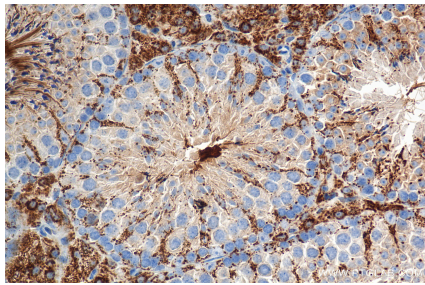
## Selected Validation Data



Various lysates were subjected to SDS PAGE followed by western blot with 85426-2-RR (ALDH1B1 antibody) at dilution of 1:10000 incubated at room temperature for 1.5 hours.



Immunohistochemical analysis of paraffin-embedded mouse testis tissue slide using 85426-2-RR (ALDH1B1 antibody) at dilution of 1:1000 (under 10x lens). Heat mediated antigen retrieval with Tris-EDTA buffer (pH 9.0).



Immunohistochemical analysis of paraffin-embedded mouse testis tissue slide using 85426-2-RR (ALDH1B1 antibody) at dilution of 1:1000 (under 40x lens). Heat mediated antigen retrieval with Tris-EDTA buffer (pH 9.0).