

For Research Use Only

# ILK Recombinant antibody

Catalog Number: 85428-5-RR



## Basic Information

|  |  |   |
|--|--|---|
| <b>Catalog Number:</b><br>85428-5-RR                           | <b>GenBank Accession Number:</b><br>BC001554 | <b>Purification Method:</b><br>Protein A purification                     |
| <b>Size:</b><br>100ul , Concentration: 1000 µg/ml by Nanodrop; | <b>GeneID (NCBI):</b><br>3611                | <b>CloneNo.:</b><br>242982A5  |
| <b>Source:</b><br>Rabbit                                       | <b>UNIPROT ID:</b><br>Q13418                 | <b>Recommended Dilutions:</b><br>WB 1:5000-1:50000<br>IF/ICC 1:250-1:1000 |
| <b>Isotype:</b><br>IgG   | <b>Full Name:</b><br>integrin-linked kinase  |   |
| <b>Immunogen Catalog Number:</b><br>AG3570                     | <b>Calculated MW:</b><br>451 aa, 59 kDa      |   |
|  | <b>Observed MW:</b><br>51 kDa                |   |

## Applications

|  |  |
|--|--|
| <b>Tested Applications:</b><br>WB, IF/ICC, ELISA | <b>Positive Controls:</b>  |
| <b>Species Specificity:</b><br>human, mouse, pig | <b>WB :</b> K-562 cells, pig colon tissue, HeLa cells, HEK-293 cells, mouse brain tissue |
|  | <b>IF/ICC :</b> HeLa cells,  |

## Background Information

ILK(Integrin-linked protein kinase) is also named as p59, PAT-4, DKFZp686F1765, ILK-1, ILK-2, ILK1, ILK2, p59ILK and belongs to the TKL Ser/Thr protein kinase family. This protein localizes to multiple sites, including the cytoplasm, and imports into the nucleus through sequences in its N-terminus, via active transport mechanisms that involve nuclear pore complexes(PMID: 18635968). ILK performs crucial roles in the control of intestinal cell and crypt-villus axis homeostasis-especially with regard to basement membrane fibronectin deposition-as well as cell proliferation, spreading, and migration(PMID:19885839).

## Storage

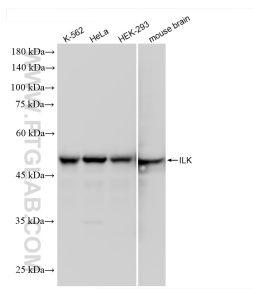
**Storage:**  
Store at -20°C. Stable for one year after shipment.  
**Storage Buffer:**  
PBS with 0.02% sodium azide and 50% glycerol pH 7.3.  
**Aliquoting is unnecessary for -20°C storage**

\*\*\* 20ul sizes contain 0.1% BSA

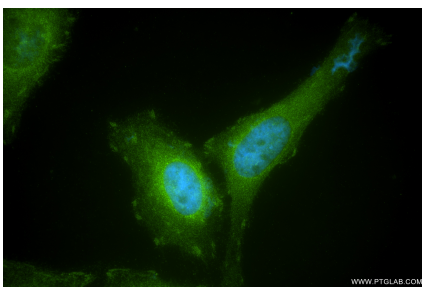
For technical support and original validation data for this product please contact:  
T: 1 (888) 4PTGLAB (1-888-478-4522) (toll free in USA), or 1(312) 455-8498 (outside USA)  
E: [proteintech@ptglab.com](mailto:proteintech@ptglab.com)  
W: [ptglab.com](http://ptglab.com)

This product is exclusively available under Proteintech Group brand and is not available to purchase from any other manufacturer.

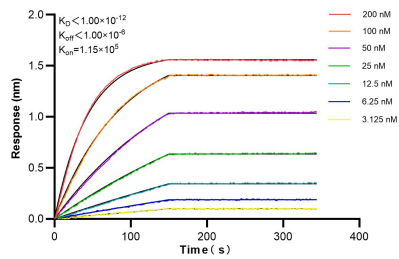
## Selected Validation Data



Various lysates were subjected to SDS PAGE followed by western blot with 85428-5-RR (ILK antibody) at dilution of 1:10000 incubated at room temperature for 1.5 hours.



Immunofluorescent analysis of (4% PFA) fixed HeLa cells using ILK antibody (85428-5-RR, Clone: 242982A5 ) at dilution of 1:500 and CoraLite® 488-Conjugated Goat Anti-Rabbit IgG(H+L) (SA00013-2).



Biolayer interferometry (BLI) kinetic assays of 85428-5-RR against Human ILK were performed. The affinity constant is below 1 pM.