

For Research Use Only

ILK Recombinant antibody, PBS Only (Detector)

Catalog Number: 85428-6-PBS



Basic Information

Catalog Number: 85428-6-PBS	GenBank Accession Number: BC001554	Purification Method: Protein A purification
Size: 100ug , Concentration: 1 mg/ml by Nanodrop;	GeneID (NCBI): 3611	CloneNo.: 242982B10
Source: Rabbit	UNIPROT ID: Q13418	
Isotype: IgG	Full Name: integrin-linked kinase	
Immunogen Catalog Number: AG3570	Calculated MW: 451 aa, 59 kDa	

Applications

Tested Applications:
Sandwich ELISA, Indirect ELISA, Sample test

Species Specificity:
human

Product Information

85428-6-PBS targets ILK as part of a matched antibody pair:

MP01945-3: 85428-7-PBS capture and 85428-6-PBS detection (validated in Sandwich ELISA)

Unconjugated rabbit recombinant monoclonal antibody in PBS only (BSA and azide free) storage buffer at a concentration of 1 mg/mL, ready for conjugation. Created using Proteintech's proprietary in-house recombinant technology. Recombinant production enables unrivalled batch-to-batch consistency, easy scale-up, and future security of supply.

This conjugation ready format makes antibodies ideal for use in many applications including: ELISAs, multiplex assays requiring matched pairs, mass cytometry, and multiplex imaging applications. Antibody use should be optimized by the end user for each application and assay.

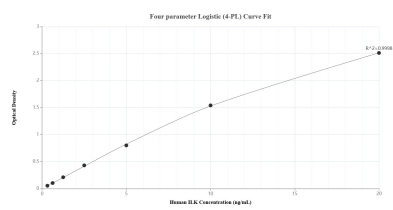
Storage

Storage:
Store at -80°C.
Storage Buffer:
PBS only, pH7.3

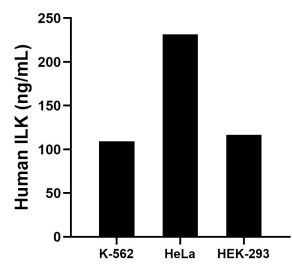
For technical support and original validation data for this product please contact:
T: 1 (888) 4PTGLAB (1-888-478-4522) (toll free in USA), or 1(312) 455-8498 (outside USA)
E: proteintech@ptglab.com
W: ptglab.com

This product is exclusively available under Proteintech Group brand and is not available to purchase from any other manufacturer.

Selected Validation Data



Sandwich ELISA standard curve of MP01945-3, Human ILK Recombinant Matched Antibody Pair - PBS only. 85428-7-PBS was coated to a plate as the capture antibody and incubated with serial dilutions of standard Ag3570. 85428-6-PBS was HRP conjugated as the detection antibody. Range: 0.313-20 ng/mL



The mean ILK concentration was determined to be 109.04 ng/mL in K-562 cell extract based on a 3.00 mg/mL extract load, 231.54 ng/mL in HeLa cell extract based on a 3.00 mg/mL extract load and 116.50 ng/mL in HEK-293 cell extract based on a 4.50 mg/mL extract load.