

For Research Use Only

# BRCC3 Recombinant antibody

Catalog Number: 85430-4-RR



## Basic Information

Catalog Number:

85430-4-RR

Size:

100ul, Concentration: 1000 µg/ml by  
Nanodrop;

Source:

Rabbit

Isotype:

IgG

Immunogen Catalog Number:

AG7584

GenBank Accession Number:

BC002999

GeneID (NCBI):

79184

UNIPROT ID:

P46736

Full Name:

BRCA1/BRCA2-containing complex,  
subunit 3

Calculated MW:

36 kDa

Observed MW:

35 kDa

Purification Method:

Protein A purification

CloneNo.:

242931B9

Recommended Dilutions:

WB 1:5000-1:50000

## Applications

Tested Applications:

WB, ELISA

Species Specificity:

human, mouse, rat

Positive Controls:

WB : SK-BR-3 cells, HeLa cells, HEK-293T cells, MCF-7  
cells, HT-29 cells, Neuro-2a cells, HSC-T6 cells

## Background Information

BRCA1-BRCA2-containing complex subunit 3 (BRCC3), a Lys-63-specific deubiquitinase, is a member of the JAMM/MPN family of zinc metalloproteases. BRCC3 have been shown to promote the inflammasome activation by deubiquitinating NOD-like receptor containing pyrin domain 3 (NLRP3). BRCC3 is associated with G2/M arrest in breast cancer cells and DNA damage. The expression of BRCC3 is associated with increased cell proliferation. (PMID: 23246432, PMID: 30272359)

## Storage

Storage:

Store at -20°C. Stable for one year after shipment.

Storage Buffer:

PBS with 0.02% sodium azide and 50% glycerol, pH7.3

Aliquoting is unnecessary for -20°C storage

\*\*\* 20ul sizes contain 0.1% BSA

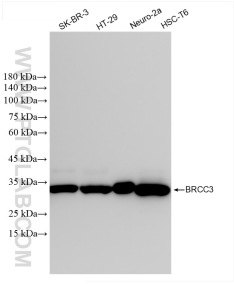
For technical support and original validation data for this product please contact:

T: 1 (888) 4PTGLAB (1-888-478-4522) (toll free  
in USA), or 1(312) 455-8498 (outside USA)

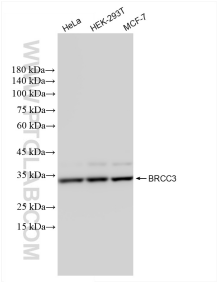
E: [proteintech@ptglab.com](mailto:proteintech@ptglab.com)  
W: [ptglab.com](http://ptglab.com)

This product is exclusively available under Proteintech  
Group brand and is not available to purchase from any  
other manufacturer.

Selected Validation Data



Various lysates were subjected to SDS PAGE followed by western blot with 85430-4-RR (BRCC3 antibody) at dilution of 1:10000 incubated at room temperature for 1.5 hours.



Various lysates were subjected to SDS PAGE followed by western blot with 85430-4-RR (BRCC3 antibody) at dilution of 1:10000 incubated at room temperature for 1.5 hours.