

For Research Use Only

# CTR9 Recombinant antibody, PBS Only (Capture)

Catalog Number: 85432-2-PBS



## Basic Information

|   |  |   |
|---|--|---|
| <b>Catalog Number:</b><br>85432-2-PBS                       | <b>GenBank Accession Number:</b><br>BC058914   | <b>Purification Method:</b><br>Protein A purification |
| <b>Size:</b><br>100ug , Concentration: 1 mg/ml by Nanodrop; | <b>GeneID (NCBI):</b><br>9646  | <b>CloneNo.:</b><br>242949D8                          |
| <b>Source:</b><br>Rabbit                                    | <b>UNIPROT ID:</b><br>Q6PD62   |   |
| <b>Isotype:</b><br>IgG                                      | <b>Full Name:</b><br>Ctr9, Paf1/RNA polymerase II complex component, homolog (S. cerevisiae) |   |
| <b>Immunogen Catalog Number:</b><br>AG15690                 | <b>Calculated MW:</b><br>1173 aa, 134 kDa  |   |

## Applications

**Tested Applications:**  
Cytometric bead array, Sandwich ELISA, Indirect ELISA, Sample test

**Species Specificity:**  
human

## Product Information

85432-2-PBS targets CTR9 as part of a matched antibody pair.

MP01950-1: 85432-2-PBS capture and 85432-1-PBS detection (validated in Cytometric bead array, Sandwich ELISA)

Unconjugated rabbit recombinant monoclonal antibody in PBS only (BSA and azide free) storage buffer at a concentration of 1 mg/mL, ready for conjugation. Created using Proteintech's proprietary in-house recombinant technology. Recombinant production enables unrivalled batch-to-batch consistency, easy scale-up, and future security of supply.

This conjugation ready format makes antibodies ideal for use in many applications including: ELISAs, multiplex assays requiring matched pairs, mass cytometry, and multiplex imaging applications. Antibody use should be optimized by the end user for each application and assay.

## Storage

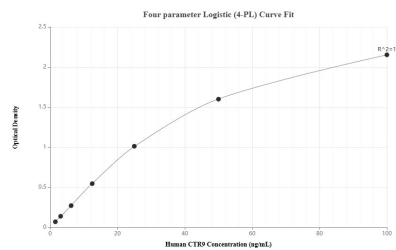
**Storage:**  
Store at -80°C.

**Storage Buffer:**  
PBS only, pH7.3

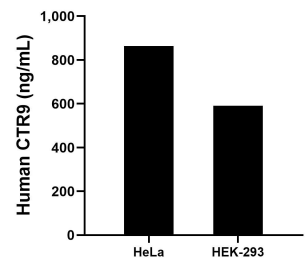
For technical support and original validation data for this product please contact:  
T: 1 (888) 4PTGLAB (1-888-478-4522) (toll free in USA), or 1(312) 455-8498 (outside USA)  
E: [proteintech@ptglab.com](mailto:proteintech@ptglab.com)  
W: [ptglab.com](http://ptglab.com)

This product is exclusively available under Proteintech Group brand and is not available to purchase from any other manufacturer.

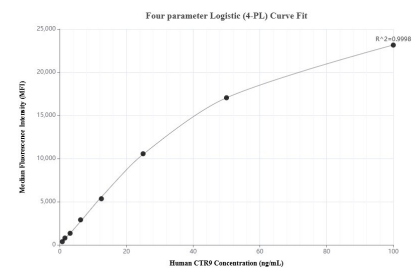
## Selected Validation Data



Sandwich ELISA standard curve of MP01950-1, Human CTR9 Recombinant Matched Antibody Pair - PBS only. 85432-2-PBS was coated to a plate as the capture antibody and incubated with serial dilutions of standard Ag15690. 85432-1-PBS was HRP conjugated as the detection antibody. Range: 1.56-100 ng/mL



The mean CTR9 concentration was determined to be 864.35 ng/mL in HeLa cell extract based on a 4.5 mg/mL extract load and 590.41 ng/mL in HEK-293 cell extract based on a 2.1 mg/mL extract load.



Cytometric bead array standard curve of MP01950-1, CTR9 Recombinant Matched Antibody Pair, PBS Only. Capture antibody: 85432-2-PBS. Detection antibody: 85432-1-PBS. Standard: Ag15690. Range: 0.781-100 ng/mL