

For Research Use Only

# PFKFB4 Recombinant antibody, PBS Only (Capture)

Catalog Number: 85444-3-PBS



## Basic Information

<b>Catalog Number:</b> 85444-3-PBS	<b>GenBank Accession Number:</b> NM_001317134	<b>Purification Method:</b> Protein A purification
<b>Size:</b> 100ug , Concentration: 1 mg/ml by Nanodrop;	<b>GeneID (NCBI):</b> 5210	<b>CloneNo.:</b> 242962H8
<b>Source:</b> Rabbit	<b>UNIPROT ID:</b> Q16877	
<b>Isotype:</b> IgG	<b>Full Name:</b> 6-phosphofructo-2-kinase/fructose-2,6-biphosphatase 4	
<b>Immunogen Catalog Number:</b> AG30571	<b>Calculated MW:</b> 54 kDa	
	<b>Observed MW:</b> 54 kDa	

## Applications

**Tested Applications:**  
WB, Cytometric bead array, Sandwich ELISA, Indirect ELISA, Sample test

**Species Specificity:**  
human

## Product Information

85444-3-PBS targets PFKFB4 as part of a matched antibody pair:

MP01998-1: 85444-3-PBS capture and 85444-2-PBS detection (validated in Cytometric bead array, Sandwich ELISA)

MP01998-2: 85444-3-PBS capture and 85444-1-PBS detection (validated in Cytometric bead array)

Unconjugated rabbit recombinant monoclonal antibody in PBS only (BSA and azide free) storage buffer at a concentration of 1 mg/mL, ready for conjugation. Created using Proteintech's proprietary in-house recombinant technology. Recombinant production enables unrivalled batch-to-batch consistency, easy scale-up, and future security of supply.

This conjugation ready format makes antibodies ideal for use in many applications including: ELISAs, multiplex assays requiring matched pairs, mass cytometry, and multiplex imaging applications. Antibody use should be optimized by the end user for each application and assay.

## Storage

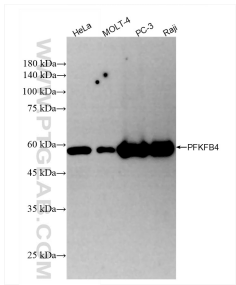
**Storage:**  
Store at -80°C.

**Storage Buffer:**  
PBS only, pH7.3

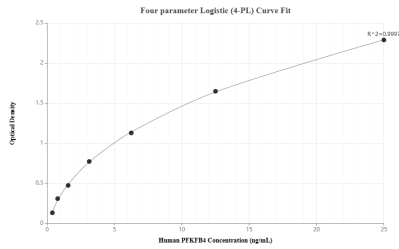
For technical support and original validation data for this product please contact:  
T: 1 (888) 4PTGLAB (1-888-478-4522) (toll free in USA), or 1(312) 455-8498 (outside USA)  
E: [proteintech@ptglab.com](mailto:proteintech@ptglab.com)  
W: [ptglab.com](http://ptglab.com)

This product is exclusively available under Proteintech Group brand and is not available to purchase from any other manufacturer.

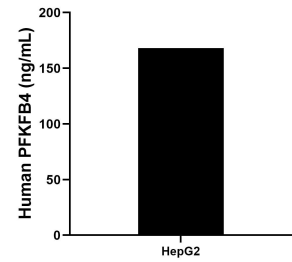
Selected Validation Data



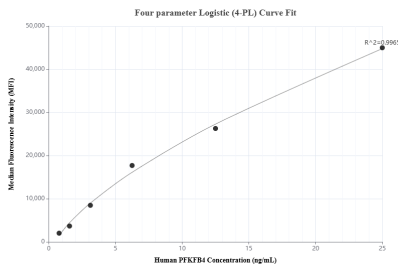
Various lysates were subjected to SDS PAGE followed by western blot with 85444-3-RR (PFKFB4 antibody) at dilution of 1:2000 incubated at room temperature for 1.5 hours. This data was developed using the same antibody clone with 85444-3-PBS in a different storage buffer formulation.



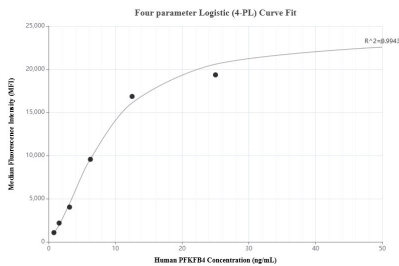
Sandwich ELISA standard curve of MP01998-1, Human PFKFB4 Recombinant Matched Antibody Pair - PBS only. 85444-3-PBS was coated to a plate as the capture antibody and incubated with serial dilutions of standard Ag30571. 85444-2-PBS was HRP conjugated as the detection antibody. Range: 0.781-25 ng/mL



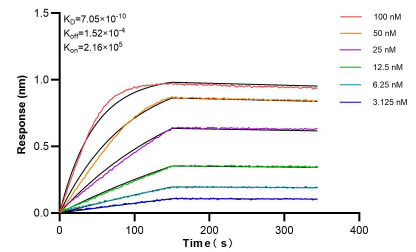
The mean PFKFB4 concentration was determined to be 167.95 ng/mL in HepG2 cell extract based on a 1.8 mg/mL extract load.



Cytometric bead array standard curve of MP01998-1, PFKFB4 Recombinant Matched Antibody Pair, PBS Only. Capture antibody: 85444-3-PBS. Detection antibody: 85444-2-PBS. Standard: Ag30571. Range: 0.781-25 ng/mL



Cytometric bead array standard curve of MP01998-2, PFKFB4 Recombinant Matched Antibody Pair, PBS Only. Capture antibody: 85444-3-PBS. Detection antibody: 85444-1-PBS. Standard: Ag30571. Range: 0.781-50 ng/mL



Bilayer interferometry (BLI) kinetic assays of 85444-3-RR against Human PFKFB4 were performed. The affinity constant is 0.705 nM.