

For Research Use Only

PPA1 Recombinant antibody

Catalog Number: 85445-3-RR



Basic Information

Catalog Number: 85445-3-RR	GenBank Accession Number: BC001022	Purification Method: Protein A purification
Size: 100ul , Concentration: 1000 µg/ml by Nanodrop;	GeneID (NCBI): 5464	CloneNo.: 242963D1
Source: Rabbit	UNIPROT ID: Q15181	Recommended Dilutions: WB 1:5000-1:50000 IHC 1:1000-1:4000
Isotype: IgG	Full Name: pyrophosphatase (inorganic) 1	
Immunogen Catalog Number: AG6969	Calculated MW: 33 kDa	
	Observed MW: 33 kDa	

Applications

Tested Applications: WB, IHC, ELISA	Positive Controls:
Species Specificity: human, mouse, rat	WB : HeLa cells, HepG2 cells, HEK-293T cells, A431 cells, NIH/3T3 cells, C6 cells
Note-IHC: suggested antigen retrieval with TE buffer pH 9.0; (*) Alternatively, antigen retrieval may be performed with citrate buffer pH 6.0	IHC : human ovary cancer tissue,

Background Information

PPA1(Inorganic pyrophosphatase) is also named as IOPPP, PP and PPase. It maintains the thermodynamic favorability of these reactions by catalyzing the hydrolysis of pyrophosphates into organic phosphates, which are then exported across the cell membrane(PMID:16300924).The erythrocyte inorganic pyrophosphatase molecule would appear to be a dimer(PMID:4130389).

Storage

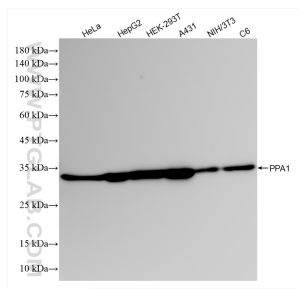
Storage:
Store at -20°C. Stable for one year after shipment.
Storage Buffer:
PBS with 0.02% sodium azide and 50% glycerol pH 7.3.
Aliquoting is unnecessary for -20°C storage

*** 20ul sizes contain 0.1% BSA

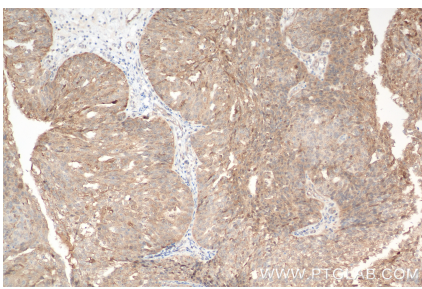
For technical support and original validation data for this product please contact:
T: 1 (888) 4PTGLAB (1-888-478-4522) (toll free in USA), or 1(312) 455-8498 (outside USA)
E: proteintech@ptglab.com
W: ptglab.com

This product is exclusively available under Proteintech Group brand and is not available to purchase from any other manufacturer.

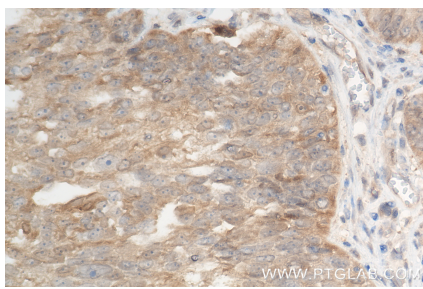
Selected Validation Data



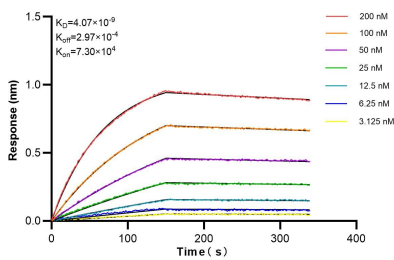
Various lysates were subjected to SDS PAGE followed by western blot with 85445-3-RR (PPA1 antibody) at dilution of 1:10000 incubated at room temperature for 1.5 hours.



Immunohistochemical analysis of paraffin-embedded human ovary cancer tissue slide using 85445-3-RR (PPA1 antibody) at dilution of 1:2000 (under 10x lens). Heat mediated antigen retrieval with Tris-EDTA buffer (pH 9.0).



Immunohistochemical analysis of paraffin-embedded human ovary cancer tissue slide using 85445-3-RR (PPA1 antibody) at dilution of 1:2000 (under 40x lens). Heat mediated antigen retrieval with Tris-EDTA buffer (pH 9.0).



Biolayer interferometry (BLI) kinetic assays of 85445-3-RR against Human PPA1 were performed. The affinity constant is 4.07 nM.