

For Research Use Only

HPGDS Recombinant antibody, PBS Only (Capture/Detector)

Catalog Number: 85446-1-PBS



Basic Information

Catalog Number: 85446-1-PBS	GenBank Accession Number: BC020734	Purification Method: Protein A purification
Size: 100ug , Concentration: 1 mg/ml by Nanodrop;	GeneID (NCBI): 27306	CloneNo.: 242980A5
Source: Rabbit	UNIPROT ID: O60760	
Isotype: IgG	Full Name: prostaglandin D2 synthase, hematopoietic	
Immunogen Catalog Number: AG18290	Calculated MW: 199 aa, 23 kDa	

Applications

Tested Applications:
Cytometric bead array, Sandwich ELISA, Indirect ELISA, Sample test

Species Specificity:
human

Product Information

85446-1-PBS targets HPGDS as part of a matched antibody pair:

MP02001-1: 85446-4-PBS capture and 85446-1-PBS detection (validated in Cytometric bead array)

MP02001-3: 85446-1-PBS capture and 85446-4-PBS detection (validated in Sandwich ELISA)

Unconjugated rabbit recombinant monoclonal antibody in PBS only (BSA and azide free) storage buffer at a concentration of 1 mg/mL, ready for conjugation. Created using Proteintech's proprietary in-house recombinant technology. Recombinant production enables unrivalled batch-to-batch consistency, easy scale-up, and future security of supply.

This conjugation ready format makes antibodies ideal for use in many applications including: ELISAs, multiplex assays requiring matched pairs, mass cytometry, and multiplex imaging applications. Antibody use should be optimized by the end user for each application and assay.

Storage

Storage:
Store at -80°C.
Storage Buffer:
PBS only, pH7.3

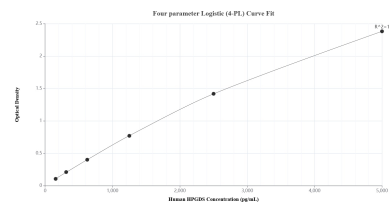
For technical support and original validation data for this product please contact:

T: 1 (888) 4PTGLAB (1-888-478-4522) (toll free in USA), or 1(312) 455-8498 (outside USA)

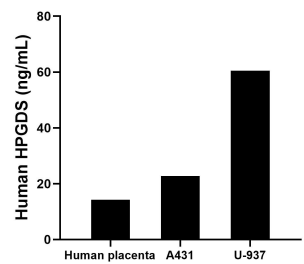
E: proteintech@ptglab.com
W: ptglab.com

This product is exclusively available under Proteintech Group brand and is not available to purchase from any other manufacturer.

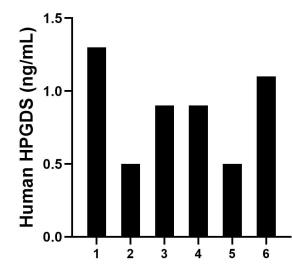
Selected Validation Data



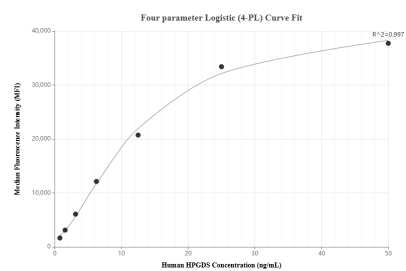
Sandwich ELISA standard curve of MP02001-3, Human HPGDS Recombinant Matched Antibody Pair - PBS only. 85446-1-PBS was coated to a plate as the capture antibody and incubated with serial dilutions of standard Ag18290. 85446-4-PBS was HRP conjugated as the detection antibody. Range: 156-5000 pg/mL



The mean HPGDS concentration was determined to be 14.2 ng/mL in human placenta extract based on a 1.3 mg/mL extract load, 22.7 ng/mL in A431 cell extract based on a 3.7 mg/mL extract load and 60.5 ng/mL in U-937 cell extract based on a 2.2 mg/mL extract load.



Serum of six individual healthy human donors was measured. The HPGDS concentration of detected samples was determined to be 0.9 ng/mL with a range of 0.5-1.3 ng/mL.



Cytometric bead array standard curve of MP02001-1, HPGDS Recombinant Matched Antibody Pair, PBS Only. Capture antibody: 85446-4-PBS. Detection antibody: 85446-1-PBS. Standard: Ag18290. Range: 0.781-50 ng/mL