

For Research Use Only

HPGDS Recombinant antibody

Catalog Number: 85446-2-RR



Basic Information

Catalog Number:

85446-2-RR

Size:

100ul, Concentration: 1000 µg/ml by Nanodrop;

Source:

Rabbit

Isotype:

IgG

Immunogen Catalog Number:

AG18290

GenBank Accession Number:

BC020734

GeneID (NCBI):

27306

UNIPROT ID:

O60760

Full Name:

prostaglandin D2 synthase, hematopoietic

Calculated MW:

199 aa, 23 kDa

Observed MW:

26 kDa, 52 kDa

Purification Method:

Protein A purification

CloneNo.:

242980B8

Recommended Dilutions:

WB 1:500-1:2000

Applications

Tested Applications:

WB, ELISA

Species Specificity:

human

Positive Controls:

WB : human placenta tissue,

Background Information

Hematopoietic PGD synthase (HPGDS), one of the PGD2 synthases, is distributed in the cytoplasm of mast cells and Th2 cells and catalyzes PGD2 production during inflammation and allergic reactions. HPGDS belongs to the gene family of σ -type glutathione S-transferase (GST). Like other GSTs, it exists as a homodimer in vivo with a molecular weight of approximately 52 kDa (PMID: 38339125).

Storage

Storage:

Store at -20°C. Stable for one year after shipment.

Storage Buffer:

PBS with 0.02% sodium azide and 50% glycerol, pH7.3

Aliquoting is unnecessary for -20°C storage

*** 20ul sizes contain 0.1% BSA

For technical support and original validation data for this product please contact:

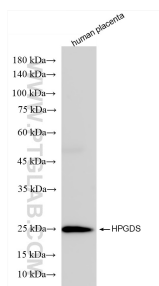
T: 1 (888) 4PTGLAB (1-888-478-4522) (toll free in USA), or 1(312) 455-8498 (outside USA)

E: proteintech@ptglab.com

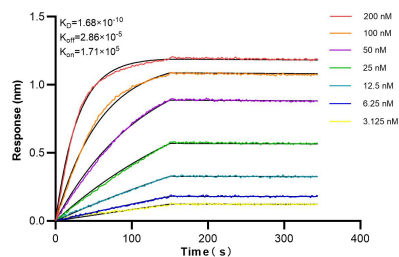
W: ptglab.com

This product is exclusively available under Proteintech Group brand and is not available to purchase from any other manufacturer.

Selected Validation Data



human placenta tissue were subjected to SDS PAGE followed by western blot with 85446-2-RR (HPGDS antibody) at dilution of 1:1000 incubated at room temperature for 1.5 hours.



Biolayer interferometry (BLI) kinetic assays of 85446-2-RR against Human HPGDS were performed. The affinity constant is 0.168 nM.