

For Research Use Only

# HPGDS Recombinant antibody, PBS Only (Capture/Detector)

Catalog Number: 85446-4-PBS



## Basic Information

<b>Catalog Number:</b> 85446-4-PBS	<b>GenBank Accession Number:</b> BC020734	<b>Purification Method:</b> Protein A purification
<b>Size:</b> 100ug , Concentration: 1 mg/ml by Nanodrop;	<b>GeneID (NCBI):</b> 27306	<b>CloneNo.:</b> 242980E6
<b>Source:</b> Rabbit	<b>UNIPROT ID:</b> O60760	
<b>Isotype:</b> IgG	<b>Full Name:</b> prostaglandin D2 synthase, hematopoietic	
<b>Immunogen Catalog Number:</b> AG18290	<b>Calculated MW:</b> 199 aa, 23 kDa	

## Applications

**Tested Applications:**  
Cytometric bead array, Sandwich ELISA, Indirect ELISA, Sample test

**Species Specificity:**  
human

## Product Information

85446-4-PBS targets HPGDS as part of a matched antibody pair:

MP02001-1: 85446-4-PBS capture and 85446-1-PBS detection (validated in Cytometric bead array)

MP02001-3: 85446-1-PBS capture and 85446-4-PBS detection (validated in Sandwich ELISA)

Unconjugated rabbit recombinant monoclonal antibody in PBS only (BSA and azide free) storage buffer at a concentration of 1 mg/mL, ready for conjugation. Created using Proteintech's proprietary in-house recombinant technology. Recombinant production enables unrivalled batch-to-batch consistency, easy scale-up, and future security of supply.

This conjugation ready format makes antibodies ideal for use in many applications including: ELISAs, multiplex assays requiring matched pairs, mass cytometry, and multiplex imaging applications. Antibody use should be optimized by the end user for each application and assay.

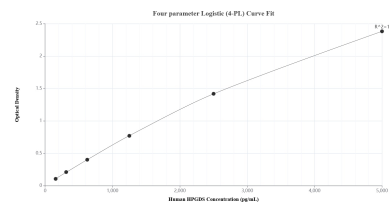
## Storage

**Storage:**  
Store at -80°C.  
**Storage Buffer:**  
PBS only, pH7.3

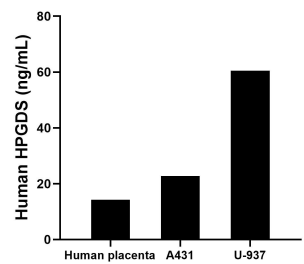
For technical support and original validation data for this product please contact:  
T: 1 (888) 4PTGLAB (1-888-478-4522) (toll free in USA), or 1(312) 455-8498 (outside USA)  
E: [proteintech@ptglab.com](mailto:proteintech@ptglab.com)  
W: [ptglab.com](http://ptglab.com)

This product is exclusively available under Proteintech Group brand and is not available to purchase from any other manufacturer.

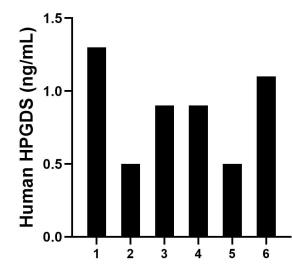
## Selected Validation Data



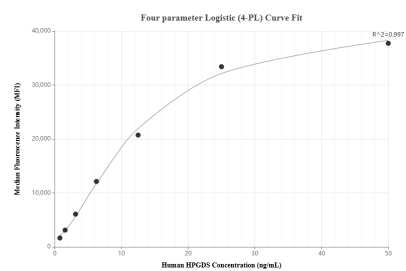
Sandwich ELISA standard curve of MP02001-3, Human HPGDS Recombinant Matched Antibody Pair - PBS only. 85446-1-PBS was coated to a plate as the capture antibody and incubated with serial dilutions of standard Ag18290. 85446-4-PBS was HRP conjugated as the detection antibody. Range: 156-5000 pg/mL



The mean HPGDS concentration was determined to be 14.2 ng/mL in human placenta extract based on a 1.3 mg/mL extract load, 22.7 ng/mL in A431 cell extract based on a 3.7 mg/mL extract load and 60.5 ng/mL in U-937 cell extract based on a 2.2 mg/mL extract load.



Serum of six individual healthy human donors was measured. The HPGDS concentration of detected samples was determined to be 0.9 ng/mL with a range of 0.5-1.3 ng/mL.



Cytometric bead array standard curve of MP02001-1, HPGDS Recombinant Matched Antibody Pair, PBS Only. Capture antibody: 85446-4-PBS. Detection antibody: 85446-1-PBS. Standard: Ag18290. Range: 0.781-50 ng/mL