

For Research Use Only

RIOK3 Recombinant antibody, PBS Only (Capture)

Catalog Number: 85449-3-PBS



Basic Information

Catalog Number: 85449-3-PBS	GenBank Accession Number: BC039729	Purification Method: Protein A purification
Size: 100ug, Concentration: 1 mg/ml by Nanodrop;	GeneID (NCBI): 8780	CloneNo.: 242996F11
Source: Rabbit	UNIPROT ID: O14730	
Isotype: IgG	Full Name: RIO kinase 3 (yeast)	
Immunogen Catalog Number: AG4497	Calculated MW: 516 aa, 60 kDa	

Applications

Tested Applications:
Cytometric bead array, Sandwich ELISA, Indirect ELISA, Sample test

Species Specificity:
human

Product Information

85449-3-PBS targets RIOK3 as part of a matched antibody pair:

MP01940-1: 85449-3-PBS capture and 85449-1-PBS detection (validated in Cytometric bead array)

MP01940-2: 85449-3-PBS capture and 85449-2-PBS detection (validated in Cytometric bead array, Sandwich ELISA)

Unconjugated rabbit recombinant monoclonal antibody in PBS only (BSA and azide free) storage buffer at a concentration of 1 mg/mL, ready for conjugation. Created using Proteintech's proprietary in-house recombinant technology. Recombinant production enables unrivalled batch-to-batch consistency, easy scale-up, and future security of supply.

This conjugation ready format makes antibodies ideal for use in many applications including: ELISAs, multiplex assays requiring matched pairs, mass cytometry, and multiplex imaging applications. Antibody use should be optimized by the end user for each application and assay.

Storage

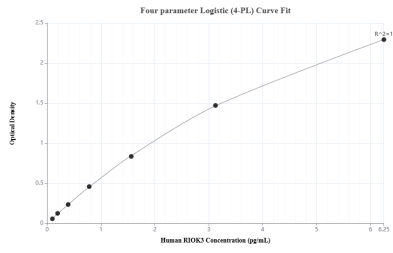
Storage:
Store at -80°C.

Storage Buffer:
PBS only, pH7.3

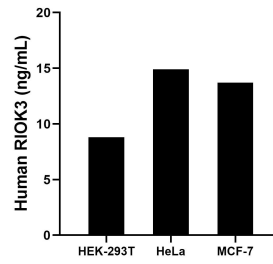
For technical support and original validation data for this product please contact:
T: 1 (888) 4PTGLAB (1-888-478-4522) (toll free in USA), or 1(312) 455-8498 (outside USA) E: proteintech@ptglab.com
W: ptglab.com

This product is exclusively available under Proteintech Group brand and is not available to purchase from any other manufacturer.

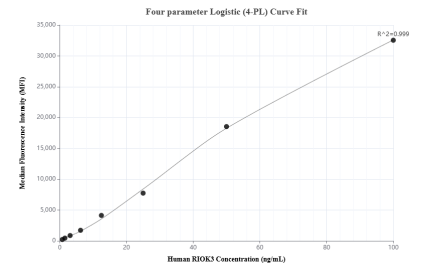
Selected Validation Data



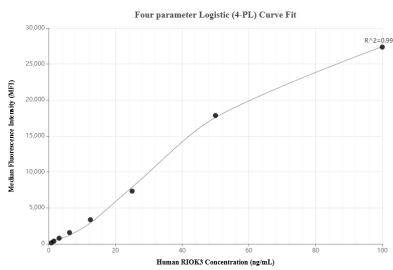
Sandwich ELISA standard curve of MP01940-2, Human R1OK3 Recombinant Matched Antibody Pair - PBS only. 85449-3-PBS was coated to a plate as the capture antibody and incubated with serial dilutions of standard Ag4497. 85449-2-PBS was HRP conjugated as the detection antibody. Range: 97.7-6250 pg/mL



The mean R1OK3 concentration was determined to be 8.12 ng/mL in HEK-293T cell extract based on a 3.2 mg/mL extract load, 14.92 ng/mL in HeLa cell extract based on a 2.1 mg/mL extract load and 13.7 ng/mL in MCF-7 cell extract based on a 1.3 mg/mL extract load.



Cytometric bead array standard curve of MP01940-1, R1OK3 Recombinant Matched Antibody Pair, PBS Only. Capture antibody: 85449-3-PBS. Detection antibody: 85449-1-PBS. Standard: Ag4497. Range: 0.781-100 ng/mL



Cytometric bead array standard curve of MP01940-2, R1OK3 Recombinant Matched Antibody Pair, PBS Only. Capture antibody: 85449-3-PBS. Detection antibody: 85449-2-PBS. Standard: Ag4497. Range: 0.781-100 ng/mL