

For Research Use Only

CA12 Recombinant antibody, PBS Only (Capture)

Catalog Number: 85595-3-PBS



Basic Information

Catalog Number: 85595-3-PBS	GenBank Accession Number: BC000278	Purification Method: Protein A purification
Size: 100ug , Concentration: 1 mg/ml by Nanodrop;	GeneID (NCBI): 771	CloneNo.: 243053B2
Source: Rabbit	UNIPROT ID: O43570	
Isotype: IgG	Full Name: carbonic anhydrase XII	
Immunogen Catalog Number: AG7107	Calculated MW: 39 kDa	
	Observed MW: 38-45 kDa	

Applications

Tested Applications:
WB, Cytometric bead array, Sandwich ELISA, Indirect ELISA, Sample test

Species Specificity:
human, mouse, rat

Product Information

85595-3-PBS targets CA12 as part of a matched antibody pair:

MP01993-1: 85595-3-PBS capture and 85595-2-PBS detection (validated in Cytometric bead array, Sandwich ELISA)

Unconjugated rabbit recombinant monoclonal antibody in PBS only (BSA and azide free) storage buffer at a concentration of 1 mg/mL, ready for conjugation. Created using Proteintech's proprietary in-house recombinant technology. Recombinant production enables unrivalled batch-to-batch consistency, easy scale-up, and future security of supply.

This conjugation ready format makes antibodies ideal for use in many applications including: ELISAs, multiplex assays requiring matched pairs, mass cytometry, and multiplex imaging applications. Antibody use should be optimized by the end user for each application and assay.

Background Information

CA12 belongs to the alpha-carbonic anhydrase family. It reverses the hydration of carbon dioxide. Overexpression of the zinc enzyme CA12 is observed in certain human cancers. The structure reveals a prototypical CA fold; however, two CA12 domains associate to form an isologous dimer, an observation that is confirmed by studies of the enzyme in solution.

Storage

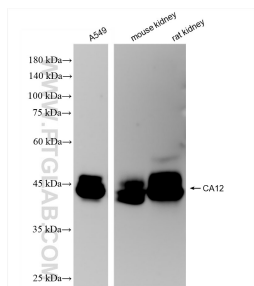
Storage:
Store at -80°C.

Storage Buffer:
PBS only, pH7.3

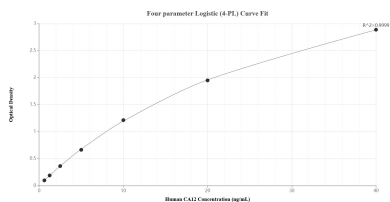
For technical support and original validation data for this product please contact:
T: 1 (888) 4PTGLAB (1-888-478-4522) (toll free in USA), or 1(312) 455-8498 (outside USA)
E: proteintech@ptglab.com
W: ptglab.com

This product is exclusively available under Proteintech Group brand and is not available to purchase from any other manufacturer.

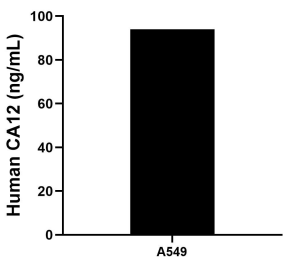
Selected Validation Data



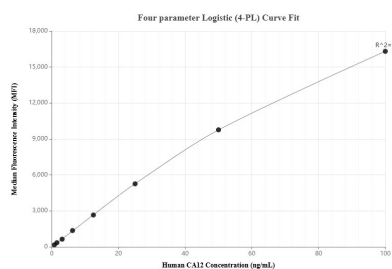
Various lysates were subjected to SDS PAGE followed by western blot with 85595-3-RR (CA12 antibody) at dilution of 1:10000 incubated at room temperature for 1.5 hours. This data was developed using the same antibody clone with 85595-3-PBS in a different storage buffer formulation.



Sandwich ELISA standard curve of MP01993-1, Human CA12 Recombinant Matched Antibody Pair - PBS only. 85595-3-PBS was coated to a plate as the capture antibody and incubated with serial dilutions of standard Ag7107. 85595-2-PBS was HRP conjugated as the detection antibody. Range: 0.625-40 ng/mL.



The mean CA12 concentration was determined to be 93.99 ng/mL in A549 cell extract based on a 3.10 mg/mL extract load.



Cytometric bead array standard curve of MP01993-1, CA12 Recombinant Matched Antibody Pair, PBS Only. Capture antibody: 85595-3-PBS. Detection antibody: 85595-2-PBS. Standard: Ag7107. Range: 0.781-100 ng/mL.