

For Research Use Only

EHD2 Recombinant antibody

Catalog Number: 85604-4-RR



Basic Information

Catalog Number:

85604-4-RR

Size:

100ul, Concentration: 1000 µg/ml by Nanodrop;

Source:

Rabbit

Isotype:

IgG

Immunogen Catalog Number:

AG2002

GenBank Accession Number:

BC014445

GeneID (NCBI):

30846

UNIPROT ID:

Q9NZN4

Full Name:

EH-domain containing 2

Calculated MW:

543 aa, 61 kDa

Observed MW:

61 kDa

Purification Method:

Protein A purification

CloneNo.:

243038C6

Recommended Dilutions:

WB 1:5000-1:50000

Applications

Tested Applications:

WB, ELISA

Species Specificity:

human, mouse, rat

Positive Controls:

WB : HeLa cells, MDA-MB-231 cells, A549 cells, mouse heart tissue, rat heart tissue

Background Information

EH domain-containing protein 2 (EHD2) is a member of the EHD protein family. It is primarily located in the plasma membrane but can also be found in the cytoplasm and endosomes. EHD2 is also a nuclear-cytoplasmic shuttle protein, acting as a corepressor of transcription to inhibit gene transcription when it enters the cell nucleus. EHD2 is a dynamin-related ATPase that plays a key role in regulating a series of biological processes. As a crucial regulator of endocytic transport, it is involved in the formation and maintenance of endosomal tubules and vesicles, which are vital for intracellular transport of proteins and other substances. EHD2 has been implicated in several human cancers and has potential as a predictive biomarker of chemotherapy efficacy.

Storage

Storage:

Store at -20°C. Stable for one year after shipment.

Storage Buffer:

PBS with 0.02% sodium azide and 50% glycerol pH 7.3.

Aliquoting is unnecessary for -20°C storage

*** 20ul sizes contain 0.1% BSA

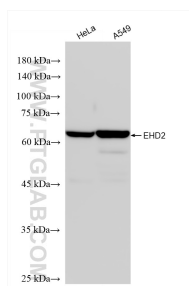
For technical support and original validation data for this product please contact:

T: 1 (888) 4PTGLAB (1-888-478-4522) (toll free in USA), or 1(312) 455-8498 (outside USA)

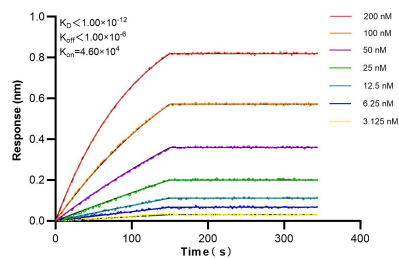
E: proteintech@ptglab.com
W: ptglab.com

This product is exclusively available under Proteintech Group brand and is not available to purchase from any other manufacturer.

Selected Validation Data



Various lysates were subjected to SDS PAGE followed by western blot with 85604-4-RR (EHD2 antibody) at dilution of 1:10000 incubated at room temperature for 1.5 hours.



Biolayer interferometry (BLI) kinetic assays of 85604-4-RR against Human EHD2 were performed. The affinity constant is below 1 pM.