

For Research Use Only

CXCL5 Recombinant antibody, PBS Only (Capture/Detector)

Catalog Number: 85606-1-PBS



Basic Information

Catalog Number: 85606-1-PBS	GenBank Accession Number: NM_002994.4	Purification Method: Protein A purification
Size: 100ug , Concentration: 1 mg/ml by Nanodrop;	GeneID (NCBI): 6374	CloneNo.: 242885A10
Source: Rabbit	UNIPROT ID: P42830	
Isotype: IgG	Full Name: chemokine (C-X-C motif) ligand 5	
	Calculated MW: 12 kDa	

Applications

Tested Applications:
Cytometric bead array, Sandwich ELISA, Indirect ELISA, Sample test

Species Specificity:
human

Product Information

85606-1-PBS targets CXCL5 as part of a matched antibody pair:

MP01987-1: 85606-1-PBS capture and 85606-3-PBS detection (validated in Cytometric bead array)

MP01987-3: 85606-3-PBS capture and 85606-1-PBS detection (validated in Sandwich ELISA)

Unconjugated rabbit recombinant monoclonal antibody in PBS only (BSA and azide free) storage buffer at a concentration of 1 mg/mL, ready for conjugation. Created using Proteintech's proprietary in-house recombinant technology. Recombinant production enables unrivalled batch-to-batch consistency, easy scale-up, and future security of supply.

This conjugation ready format makes antibodies ideal for use in many applications including: ELISAs, multiplex assays requiring matched pairs, mass cytometry, and multiplex imaging applications. Antibody use should be optimized by the end user for each application and assay.

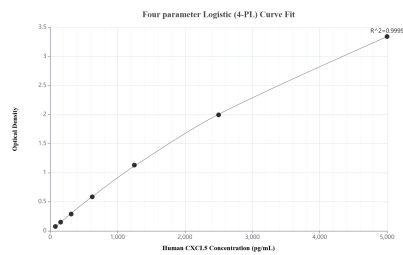
Storage

Storage:
Store at -80°C.
Storage Buffer:
PBS Only

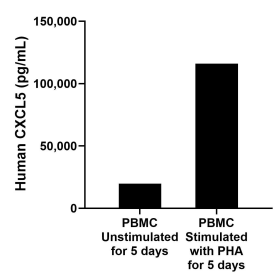
For technical support and original validation data for this product please contact:
T: 1 (888) 4PTGLAB (1-888-478-4522) (toll free in USA), or 1(312) 455-8498 (outside USA)
E: proteintech@ptglab.com
W: ptglab.com

This product is exclusively available under Proteintech Group brand and is not available to purchase from any other manufacturer.

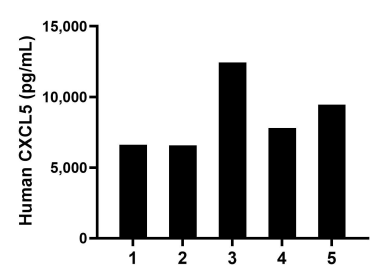
Selected Validation Data



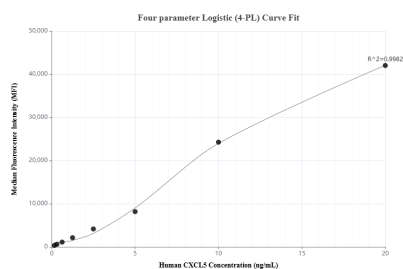
Sandwich ELISA standard curve of MP01987-3, Human CXCL5 Recombinant Matched Antibody Pair - PBS only. 85606-3-PBS was coated to a plate as the capture antibody and incubated with serial dilutions of standard Eg2939. 85606-1-PBS was HRP conjugated as the detection antibody. Range: 78.1-5000 pg/mL



Human peripheral blood mononuclear cells (PBMC) were cultured unstimulated or stimulated with 10 µg/mL PHA for 5 days. The mean CXCL5 concentration was determined to be 19,798.6 pg/mL in unstimulated PBMC supernatant, 115,946.9 pg/mL in PHA stimulated PBMC supernatant.



Serum of five individual healthy human donors was measured. The CXCL5 concentration of detected samples was determined to be 8,576.4 pg/mL with a range of 6,580.8-12,447.7 pg/mL.



Cytometric bead array standard curve of MP01987-1, CXCL5 Recombinant Matched Antibody Pair, PBS Only. Capture antibody: 85606-1-PBS. Detection antibody: 85606-3-PBS. Standard: Eg2939. Range: 0.156-20 ng/mL