

For Research Use Only

LIPA Recombinant monoclonal antibody

Catalog Number: 85607-1-RR



Basic Information

Catalog Number:

85607-1-RR

Size:

100ul , Concentration: 1000 µg/ml by Nanodrop;

Source:

Rabbit

Isotype:

IgG

Immunogen Catalog Number:

AG3627

GenBank Accession Number:

BC012287

GeneID (NCBI):

3988

UNIPROT ID:

P38571

Full Name:

lipase A, lysosomal acid, cholesterol esterase

Calculated MW:

399 aa, 45 kDa

Observed MW:

45-50 kDa

Purification Method:

Protein A purification

CloneNo.:

243025C11

Recommended Dilutions:

WB: 1:1000-1:4000

Applications

Tested Applications:

WB, ELISA

Species Specificity:

human

Positive Controls:

WB : HeLa cells, HepG2 cells, Jurkat cells, MCF-7 cells, HEK-293 cells, SKOV-3 cells

Background Information

Human acid lipase/cholesteryl esterase (LIPA) is a 46-kDa glycoprotein required for the lysosomal hydrolysis of cholesteryl esters and triglycerides that cells acquire through the receptor-mediated endocytosis of low-density lipoproteins(PMID:8432549). Defects in LIPA are the cause of Wolman disease (WOD)(PMID:8146180) and cholesteryl ester storage disease (CESD)(PMID:9633819). It has 2 isoforms produced by alternative splicing with the molecular weight of 45 kDa and 39 kDa. The full length protein has a signal peptide and several glycosylation sites.

Storage

Storage:

Store at -20°C. Stable for one year after shipment.

Storage Buffer:

PBS with 0.02% sodium azide and 50% glycerol, pH7.3

Aliquoting is unnecessary for -20°C storage

*** 20ul sizes contain 0.1% BSA

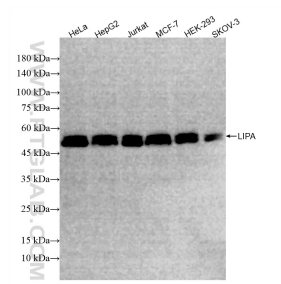
For technical support and original validation data for this product please contact:

T: 1 (888) 4PTGLAB (1-888-478-4522) (toll free in USA), or 1(312) 455-8498 (outside USA)

E: proteintech@ptglab.com
W: ptglab.com

This product is exclusively available under Proteintech Group brand and is not available to purchase from any other manufacturer.

Selected Validation Data



Various lysates were subjected to SDS PAGE followed by western blot with 85607-1-RR (LIPA antibody) at dilution of 1:2000 incubated at room temperature for 1.5 hours.