

For Research Use Only

PGLYRP1 Recombinant antibody, PBS Only (Capture)

Catalog Number:85610-3-PBS



Basic Information

Catalog Number: 85610-3-PBS	GenBank Accession Number: NM_005091.2	Purification Method: Protein A purification
Size: 100ug , Concentration: 1 mg/ml by Nanodrop;	GeneID (NCBI): 8993	CloneNo.: 243004F3
Source: Rabbit	UNIPROT ID: O75594	
Isotype: IgG	Full Name: peptidoglycan recognition protein 1	
	Calculated MW: 22 kDa	

Applications

Tested Applications:
Cytometric bead array, Sandwich ELISA, Indirect ELISA, Sample test

Species Specificity:
human

Product Information

85610-3-PBS targets PGLYRP1 as part of a matched antibody pair:

MP01966-1: 85610-3-PBS capture and 85610-2-PBS detection (validated in Cytometric bead array)

MP01966-2: 85610-3-PBS capture and 85610-1-PBS detection (validated in Cytometric bead array, Sandwich ELISA)

Unconjugated rabbit recombinant monoclonal antibody in PBS only (BSA and azide free) storage buffer at a concentration of 1 mg/mL, ready for conjugation. Created using Proteintech's proprietary in-house recombinant technology. Recombinant production enables unrivalled batch-to-batch consistency, easy scale-up, and future security of supply.

This conjugation ready format makes antibodies ideal for use in many applications including: ELISAs, multiplex assays requiring matched pairs, mass cytometry, and multiplex imaging applications. Antibody use should be optimized by the end user for each application and assay.

Storage

Storage:
Store at -80°C.
Storage Buffer:
PBS Only

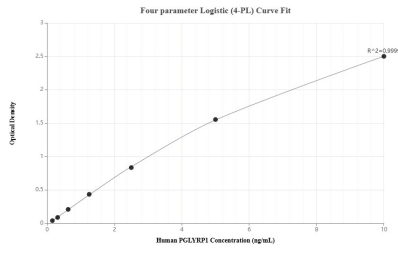
For technical support and original validation data for this product please contact:

T: 1 (888) 4PTGLAB (1-888-478-4522) (toll free in USA), or 1(312) 455-8498 (outside USA)

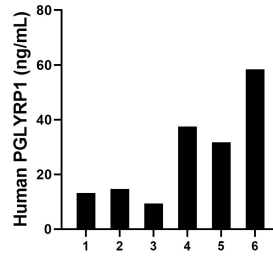
E: proteintech@ptglab.com
W: ptglab.com

This product is exclusively available under Proteintech Group brand and is not available to purchase from any other manufacturer.

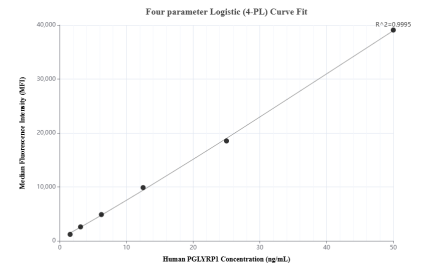
Selected Validation Data



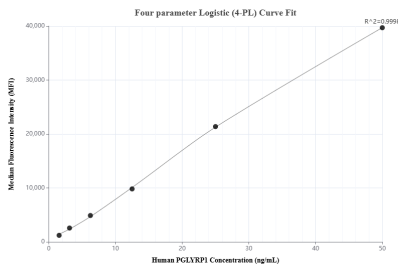
Sandwich ELISA standard curve of MP01966-2, Human PGLYRP1 Recombinant Matched Antibody Pair - PBS only. 85610-3-PBS was coated to a plate as the capture antibody and incubated with serial dilutions of standard Eg3122. 85610-1-PBS was HRP conjugated as the detection antibody. Range: 0.156-10 ng/mL



Saliva of six individual healthy human donors was measured. The human PGLYRP1 concentration of detected samples was determined to be 27.47 ng/mL with a range of 9.3 - 58.4 ng/mL



Cytometric bead array standard curve of MP01966-1, PGLYRP1 Recombinant Matched Antibody Pair, PBS Only. Capture antibody: 85610-3-PBS. Detection antibody: 85610-2-PBS. Standard: Eg3122. Range: 1.563-50 ng/mL



Cytometric bead array standard curve of MP01966-2, PGLYRP1 Recombinant Matched Antibody Pair, PBS Only. Capture antibody: 85610-3-PBS. Detection antibody: 85610-1-PBS. Standard: Eg3122. Range: 1.563-50 ng/mL