

For Research Use Only

PGLYRP1 Recombinant antibody, PBS Only

Catalog Number: 85610-4-PBS



Basic Information

Catalog Number: 85610-4-PBS	GenBank Accession Number: NM_005091.2	Purification Method: Protein A purification
Size: 100ug , Concentration: 1 mg/ml by Nanodrop;	GeneID (NCBI): 8993	CloneNo.: 243004F5
Source: Rabbit	UNIPROT ID: O75594	
Isotype: IgG	Full Name: peptidoglycan recognition protein 1	
Immunogen Catalog Number: EG3122	Calculated MW: 22 kDa	
	Observed MW: 25 kDa	

Applications

Tested Applications:
WB, IHC, IF-P, Indirect ELISA

Species Specificity:
human, mouse

Background Information

Peptidoglycan recognition protein 1 (PGLYRP1, also known as PGRP-S) belongs to a family of evolutionary conserved innate immunity proteins, which in mammals also include PGLYRP2, PGLYRP3, and PGLYRP4 (PMID: 17275309; 20418257). PGLYRP1 is highly expressed in polymorphonuclear leukocytes and to a lower extent in many non-immune cells (PMID: 20418257). It recognizes bacterial peptidoglycan and functions in antibacterial immunity and inflammation (PMID: 20418257). PGLYRP1 has been identified as a ligand for TREM-1 (PMID: 25595774).

Storage

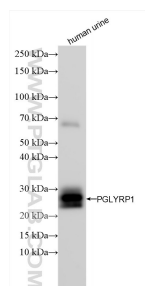
Storage:
Store at -80°C.

Storage Buffer:
PBS only, pH7.3

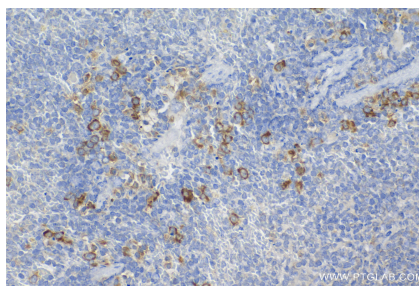
For technical support and original validation data for this product please contact:
T: 1 (888) 4PTGLAB (1-888-478-4522) (toll free in USA), or 1(312) 455-8498 (outside USA)
E: proteintech@ptglab.com
W: ptglab.com

This product is exclusively available under Proteintech Group brand and is not available to purchase from any other manufacturer.

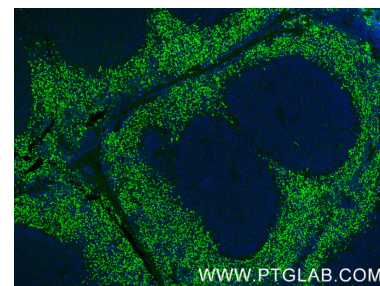
Selected Validation Data



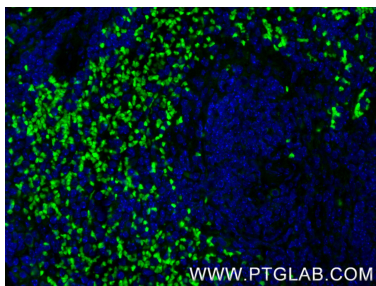
human urine sample were subjected to SDS PAGE followed by western blot with 85610-4-RR (PGLYRP1 antibody) at dilution of 1:2000 incubated at room temperature for 1.5 hours. This data was developed using the same antibody clone with 85610-4-PBS in a different storage buffer formulation.



Immunohistochemical analysis of paraffin-embedded mouse spleen tissue slide using 85610-4-RR (PGLYRP1 antibody) at dilution of 1:200 (under 40x lens). Heat mediated antigen retrieval with Tris-EDTA buffer (pH 9.0). This data was developed using the same antibody clone with 85610-4-PBS in a different storage buffer formulation.



Immunofluorescent analysis of (4% PFA) fixed paraffin-embedded mouse spleen tissue using PGLYRP1 antibody (85610-4-RR, Clone: 243004F5) at dilution of 1:200 and CoraLite®488-Conjugated Goat Anti-Rabbit IgG(H+L) (SA00013-2). Heat mediated antigen retrieval with Tris-EDTA buffer (pH 9.0). This data was developed using the same antibody clone with 85610-4-PBS in a different storage buffer formulation.



Immunofluorescent analysis of (4% PFA) fixed paraffin-embedded mouse spleen tissue using PGLYRP1 antibody (85610-4-RR, Clone: 243004F5) at dilution of 1:200 and CoraLite®488-Conjugated Goat Anti-Rabbit IgG(H+L) (SA00013-2). Heat mediated antigen retrieval with Tris-EDTA buffer (pH 9.0). This data was developed using the same antibody clone with 85610-4-PBS in a different storage buffer formulation.