

For Research Use Only

PGLYRP1 Recombinant antibody

Catalog Number: 85610-4-RR



Basic Information

Catalog Number: 85610-4-RR	GenBank Accession Number: NM_005091.2	Purification Method: Protein A purification
Size: 100ul , Concentration: 1000 µg/ml by Nanodrop;	GeneID (NCBI): 8993	CloneNo.: 243004F5
Source: Rabbit	UNIPROT ID: O75594	Recommended Dilutions: WB 1:1000-1:4000 IHC 1:50-1:500 IF-P 1:50-1:500
Isotype: IgG	Full Name: peptidoglycan recognition protein 1	
Immunogen Catalog Number: EG3122	Calculated MW: 22 kDa	
	Observed MW: 25 kDa	

Applications

Tested Applications: WB, IHC, IF-P, ELISA	Positive Controls:
Species Specificity: human, mouse	WB : human urine,
Note-IHC: suggested antigen retrieval with TE buffer pH 9.0; (*) Alternatively, antigen retrieval may be performed with citrate buffer pH 6.0	IHC : mouse spleen tissue,
	IF-P : mouse spleen tissue,

Background Information

Peptidoglycan recognition protein 1 (PGLYRP1, also known as PGRP-S) belongs to a family of evolutionary conserved innate immunity proteins, which in mammals also include PGLYRP2, PGLYRP3, and PGLYRP4 (PMID: 17275309; 20418257). PGLYRP1 is highly expressed in polymorphonuclear leukocytes and to a lower extent in many non-immune cells (PMID: 20418257). It recognizes bacterial peptidoglycan and functions in antibacterial immunity and inflammation (PMID: 20418257). PGLYRP1 has been identified as a ligand for TREM-1 (PMID: 25595774).

Storage

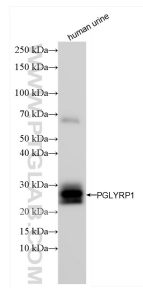
Storage:
Store at -20°C. Stable for one year after shipment.
Storage Buffer:
PBS with 0.02% sodium azide and 50% glycerol, pH7.3
Aliquoting is unnecessary for -20°C storage

*** 20ul sizes contain 0.1% BSA

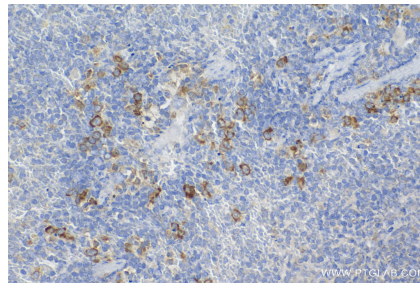
For technical support and original validation data for this product please contact:
T: 1 (888) 4PTGLAB (1-888-478-4522) (toll free in USA), or 1(312) 455-8498 (outside USA)
E: proteintech@ptglab.com
W: ptglab.com

This product is exclusively available under Proteintech Group brand and is not available to purchase from any other manufacturer.

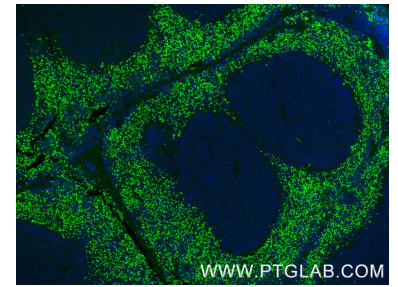
Selected Validation Data



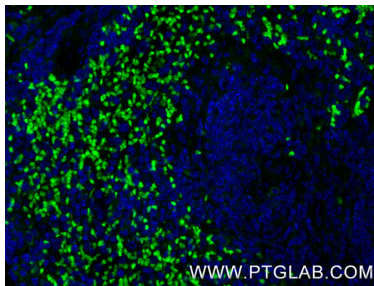
human urine sample were subjected to SDS PAGE followed by western blot with 85610-4-RR (PGLYRP1 antibody) at dilution of 1:2000 incubated at room temperature for 1.5 hours.



Immunohistochemical analysis of paraffin-embedded mouse spleen tissue slide using 85610-4-RR (PGLYRP1 antibody) at dilution of 1:200 (under 40x lens). Heat mediated antigen retrieval with Tris-EDTA buffer (pH 9.0).



Immunofluorescent analysis of (4% PFA) fixed paraffin-embedded mouse spleen tissue using PGLYRP1 antibody (85610-4-RR, Clone: 243004F5) at dilution of 1:200 and CoraLite®488-Conjugated Goat Anti-Rabbit IgG(H+L) (SA00013-2). Heat mediated antigen retrieval with Tris-EDTA buffer (pH 9.0).



Immunofluorescent analysis of (4% PFA) fixed paraffin-embedded mouse spleen tissue using PGLYRP1 antibody (85610-4-RR, Clone: 243004F5) at dilution of 1:200 and CoraLite®488-Conjugated Goat Anti-Rabbit IgG(H+L) (SA00013-2). Heat mediated antigen retrieval with Tris-EDTA buffer (pH 9.0).