

For Research Use Only

SRPK2 Recombinant antibody, PBS Only (Detector)

Catalog Number: 85613-2-PBS



Basic Information

Catalog Number: 85613-2-PBS	GenBank Accession Number: BC035214	Purification Method: Protein A purification
Size: 100ug , Concentration: 1 mg/ml by Nanodrop;	GeneID (NCBI): 6733	CloneNo.: 242935F7
Source: Rabbit	UNIPROT ID: P78362	
Isotype: IgG	Full Name: SFRS protein kinase 2	
Immunogen Catalog Number: AG17885	Calculated MW: 688 aa, 78 kDa	

Applications

Tested Applications:
Cytometric bead array, Indirect ELISA

Species Specificity:
human

Product Information

85613-2-PBS targets SRPK2 as part of a matched antibody pair:

MP01968-2: 85613-3-PBS capture and 85613-2-PBS detection (validated in Cytometric bead array)

Unconjugated rabbit recombinant monoclonal antibody in PBS only (BSA and azide free) storage buffer at a concentration of 1 mg/mL, ready for conjugation. Created using Proteintech's proprietary in-house recombinant technology. Recombinant production enables unrivalled batch-to-batch consistency, easy scale-up, and future security of supply.

This conjugation ready format makes antibodies ideal for use in many applications including: ELISAs, multiplex assays requiring matched pairs, mass cytometry, and multiplex imaging applications. Antibody use should be optimized by the end user for each application and assay.

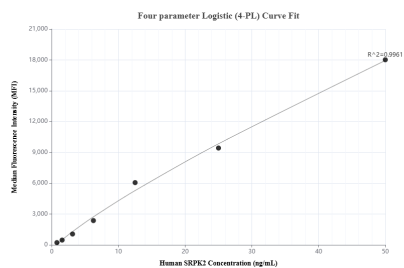
Storage

Storage:
Store at -80°C.
Storage Buffer:
PBS only, pH7.3

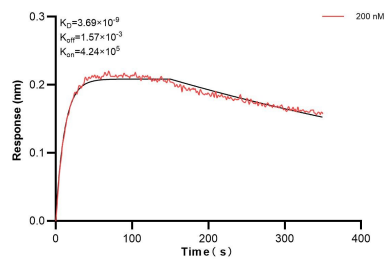
For technical support and original validation data for this product please contact:
T: 1 (888) 4PTGLAB (1-888-478-4522) (toll free in USA), or 1(312) 455-8498 (outside USA)
E: proteintech@ptglab.com
W: ptglab.com

This product is exclusively available under Proteintech Group brand and is not available to purchase from any other manufacturer.

Selected Validation Data



Cytometric bead array standard curve of MP01968-2, SRPK2 Recombinant Matched Antibody Pair, PBS Only. Capture antibody: 85613-3-PBS. Detection antibody: 85613-2-PBS. Standard: Ag17885. Range: 0.781-50 ng/mL



Biolayer interferometry (BLI) kinetic assay of 85613-2-PBS against Human SRPK2 was performed. The affinity constant is 3.69 nM.