

For Research Use Only

# SRPK2 Recombinant antibody, PBS Only

Catalog Number: 85613-5-PBS



## Basic Information

<b>Catalog Number:</b> 85613-5-PBS	<b>GenBank Accession Number:</b> BC035214	<b>Purification Method:</b> Protein A purification
<b>Size:</b> 100ug , Concentration: 1 mg/ml by Nanodrop;	<b>GeneID (NCBI):</b> 6733	<b>CloneNo.:</b> 242935B1
<b>Source:</b> Rabbit	<b>UNIPROT ID:</b> P78362	
<b>Isotype:</b> IgG	<b>Full Name:</b> SFRS protein kinase 2	
<b>Immunogen Catalog Number:</b> AG17885	<b>Calculated MW:</b> 688 aa, 78 kDa	
	<b>Observed MW:</b> 105-110 kDa	

## Applications

**Tested Applications:**  
WB, Indirect ELISA

**Species Specificity:**  
human

## Background Information

SRPK2, also named as serine/arginine protein kinase 2 and SFRSK2, belongs to SR protein-specific kinase family which phosphorylate the serine/arginine domain containing proteins in the nuclear speckles to mediate pre-mRNA splicing (PMID: 22854045). In addition to its major role as kinase for the phosphorylation of SR proteins, SRPK2 is involved in cell cycle regulation and cell apoptosis (PMID: 19592491). SRPK2 promotes the proliferation and migration of the colon cancer cells. It has been reported to be regulated in several cancer types (PMID: 27041240). It has 2 isoforms with the calculated molecular mass of 77-79 kDa, and the apparent molecular mass of 105-115 kDa due to posttranslational modification (PMID: 12134018, 16122776).

## Storage

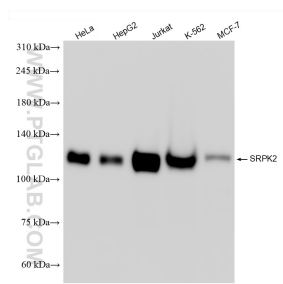
**Storage:**  
Store at -80°C.

**Storage Buffer:**  
PBS only, pH7.3

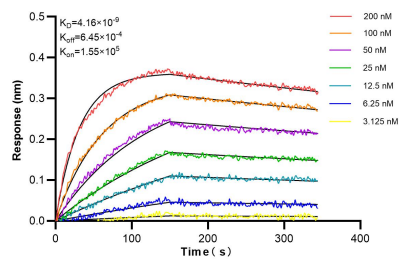
For technical support and original validation data for this product please contact:  
T: 1 (888) 4PTGLAB (1-888-478-4522) (toll free in USA), or 1(312) 455-8498 (outside USA)  
E: [proteintech@ptglab.com](mailto:proteintech@ptglab.com)  
W: [ptglab.com](http://ptglab.com)

This product is exclusively available under Proteintech Group brand and is not available to purchase from any other manufacturer.

## Selected Validation Data



Various lysates were subjected to SDS PAGE followed by western blot with 85613-5-RR (SRPK2 antibody) at dilution of 1:5000 incubated at room temperature for 1.5 hours. This data was developed using the same antibody clone with 85613-5-PBS in a different storage buffer formulation.



Biolayer interferometry (BLI) kinetic assays of 85613-5-RR against Human SRPK2 were performed. The affinity constant is 4.16 nM.