

For Research Use Only

SRPK2 Recombinant antibody

Catalog Number: 85613-5-RR



Basic Information

Catalog Number:

85613-5-RR

Size:

100ul, Concentration: 1000 ug/ml by Nanodrop;

Source:

Rabbit

Isotype:

IgG

Immunogen Catalog Number:

AG17885

GenBank Accession Number:

BC035214

GeneID (NCBI):

6733

UNIPROT ID:

P78362

Full Name:

SFRS protein kinase 2

Calculated MW:

688 aa, 78 kDa

Observed MW:

105-110 kDa

Purification Method:

Protein A purification

CloneNo.:

242935B1

Recommended Dilutions:

WB: 1:2000-1:10000

Applications

Tested Applications:

WB, ELISA

Species Specificity:

human

Positive Controls:

WB : HeLa cells, HepG2 cells, Jurkat cells, K-562 cells, MCF-7 cells

Background Information

SRPK2, also named as serine/arginine protein kinase 2 and SFRSK2, belongs to SR protein-specific kinase family which phosphorylate the serine/arginine domain containing proteins in the nuclear speckles to mediate pre-mRNA splicing (PMID: 22854045). In addition to its major role as kinase for the phosphorylation of SR proteins, SRPK2 is involved in cell cycle regulation and cell apoptosis (PMID: 19592491). SRPK2 promotes the proliferation and migration of the colon cancer cells. It has been reported to be regulated in several cancer types (PMID: 27041240). It has 2 isoforms with the calculated molecular mass of 77-79 kDa, and the apparent molecular mass of 105-115 kDa due to posttranslational modification (PMID: 12134018, 16122776).

Storage

Storage:

Store at -20°C. Stable for one year after shipment.

Storage Buffer:

PBS with 0.02% sodium azide and 50% glycerol, pH7.3

Aliquoting is unnecessary for -20°C storage

*** 20ul sizes contain 0.1% BSA

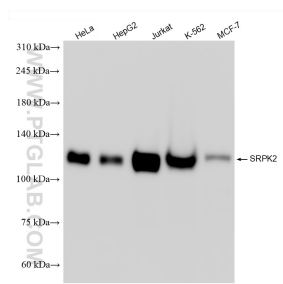
For technical support and original validation data for this product please contact:

T: 1 (888) 4PTGLAB (1-888-478-4522) (toll free in USA), or 1(312) 455-8498 (outside USA)

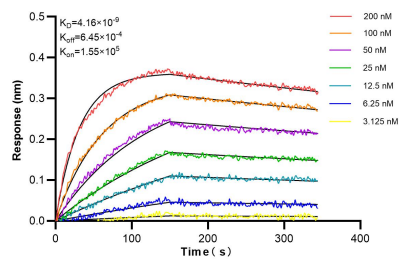
E: proteintech@ptglab.com
W: ptglab.com

This product is exclusively available under Proteintech Group brand and is not available to purchase from any other manufacturer.

Selected Validation Data



Various lysates were subjected to SDS PAGE followed by western blot with 85613-5-RR (SRPK2 antibody) at dilution of 1:5000 incubated at room temperature for 1.5 hours.



Biolayer interferometry (BLI) kinetic assays of 85613-5-RR against Human SRPK2 were performed. The affinity constant is 4.16 nM.