

For Research Use Only

# Mouse Tslp Recombinant monoclonal antibody, PBS Only (Detector)

Catalog Number:85623-1-PBS



## Basic Information

<b>Catalog Number:</b> 85623-1-PBS	<b>GenBank Accession Number:</b> NM_021367.2	<b>Purification Method:</b> Protein A purification
<b>Size:</b> 100ug , Concentration: 1 mg/ml by Nanodrop;	<b>GeneID (NCBI):</b> 53603	<b>CloneNo.:</b> 242914F6
<b>Source:</b> Rabbit	<b>UNIPROT ID:</b> Q9JIE6	
<b>Isotype:</b> IgG	<b>Full Name:</b> thymic stromal Lymphopoietin	
<b>Immunogen Catalog Number:</b> EG3312	<b>Calculated MW:</b> 16KD	

## Applications

**Tested Applications:**  
Cytometric bead array, Sandwich ELISA, Indirect ELISA, Sample test

**Species Specificity:**  
mouse

## Product Information

85623-1-PBS targets Tslp as part of a matched antibody pair:

MP01963-1: 85623-3-PBS capture and 85623-1-PBS detection (validated in Cytometric bead array, Sandwich ELISA)

Unconjugated rabbit recombinant monoclonal antibody in PBS only (BSA and azide free) storage buffer at a concentration of 1 mg/mL, ready for conjugation. Created using Proteintech's proprietary in-house recombinant technology. Recombinant production enables unrivalled batch-to-batch consistency, easy scale-up, and future security of supply.

This conjugation ready format makes antibodies ideal for use in many applications including: ELISAs, multiplex assays requiring matched pairs, mass cytometry, and multiplex imaging applications. Antibody use should be optimized by the end user for each application and assay.

## Storage

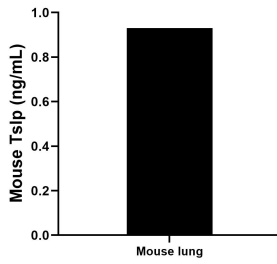
**Storage:**  
Store at -80°C.

**Storage Buffer:**  
PBS only, pH7.3

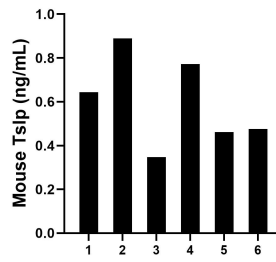
For technical support and original validation data for this product please contact:  
T: 1 (888) 4PTGLAB (1-888-478-4522) (toll free in USA), or 1(312) 455-8498 (outside USA)      E: [proteintech@ptglab.com](mailto:proteintech@ptglab.com)      W: [ptglab.com](http://ptglab.com)

**This product is exclusively available under Proteintech Group brand and is not available to purchase from any other manufacturer.**

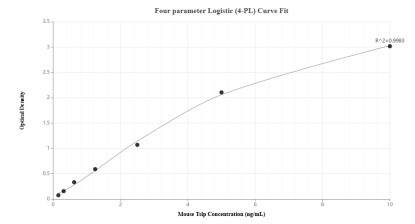
## Selected Validation Data



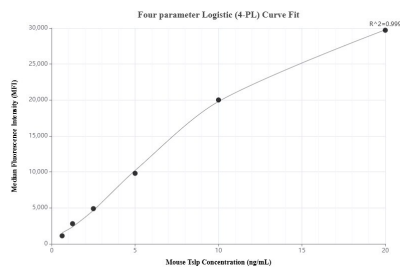
Mouse lung (1 lung, 1-2 mm pieces) were cultured for 5 days in RPMI 1640 plus 15% fetal bovine serum. An aliquot of cell culture supernatants was removed, assayed for mouse Tslp and measured 0.93 ng/mL.



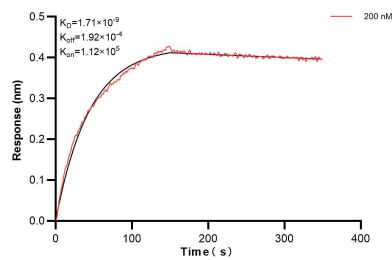
Serum of six mice was measured. The mouse Tslp concentration of detected samples was determined to be 0.60 ng/mL with a range of 0.35 - 0.89 ng/mL.



Sandwich ELISA standard curve of MP01963-1, Mouse Tslp Recombinant Matched Antibody Pair - PBS only. 85623-3-PBS was coated to a plate as the capture antibody and incubated with serial dilutions of standard Eg3312. 85623-1-PBS was HRP conjugated as the detection antibody. Range: 0.156-10 ng/mL



Cytometric bead array standard curve of MP01963-1, MOUSE Tslp Recombinant Matched Antibody Pair, PBS Only. Capture antibody: 85623-3-PBS. Detection antibody: 85623-1-PBS. Standard: Eg3312. Range: 0.625-20 ng/mL



Biolayer interferometry (BLI) kinetic assay of 85623-1-PBS against Mouse Tslp was performed. The affinity constant is 1.71 nM.