

For Research Use Only

Mouse Tslp Recombinant monoclonal antibody, PBS Only (Capture)

Catalog Number: 85623-3-PBS



Basic Information

Catalog Number: 85623-3-PBS	GenBank Accession Number: NM_021367.2	Purification Method: Protein A purification
Size: 100ug , Concentration: 1 mg/ml by Nanodrop;	GeneID (NCBI): 53603	CloneNo.: 242914C6
Source: Rabbit	UNIPROT ID: Q9JIE6	
Isotype: IgG	Full Name: thymic stromal Lymphopoietin	
Immunogen Catalog Number: EG3312	Calculated MW: 16KD	

Applications

Tested Applications:
Cytometric bead array, Sandwich ELISA, Indirect ELISA

Species Specificity:
mouse

Product Information

85623-3-PBS targets Tslp as part of a matched antibody pair:

MP01963-1: 85623-3-PBS capture and 85623-1-PBS detection (validated in Cytometric bead array, Sandwich ELISA)

MP01963-2: 85623-3-PBS capture and 85623-2-PBS detection (validated in Cytometric bead array)

Unconjugated rabbit recombinant monoclonal antibody in PBS only (BSA and azide free) storage buffer at a concentration of 1 mg/mL, ready for conjugation. Created using Proteintech's proprietary in-house recombinant technology. Recombinant production enables unrivalled batch-to-batch consistency, easy scale-up, and future security of supply.

This conjugation ready format makes antibodies ideal for use in many applications including: ELISAs, multiplex assays requiring matched pairs, mass cytometry, and multiplex imaging applications. Antibody use should be optimized by the end user for each application and assay.

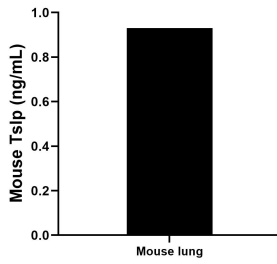
Storage

Storage:
Store at -80°C.
Storage Buffer:
PBS only, pH7.3

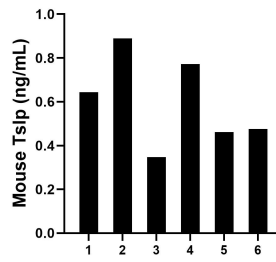
For technical support and original validation data for this product please contact:
T: 1 (888) 4PTGLAB (1-888-478-4522) (toll free in USA), or 1(312) 455-8498 (outside USA) E: proteintech@ptglab.com
W: ptglab.com

This product is exclusively available under Proteintech Group brand and is not available to purchase from any other manufacturer.

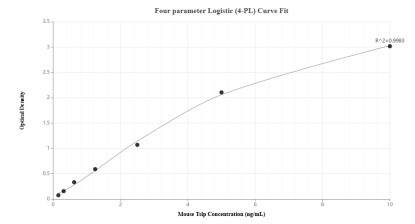
Selected Validation Data



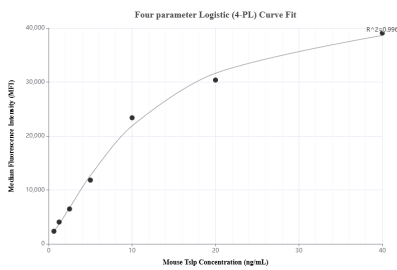
Mouse lung (1 lung, 1-2 mm pieces) were cultured for 5 days in RPMI 1640 plus 15% fetal bovine serum. An aliquot of cell culture supernatants was removed, assayed for mouse Tslp and measured 0.93 ng/mL.



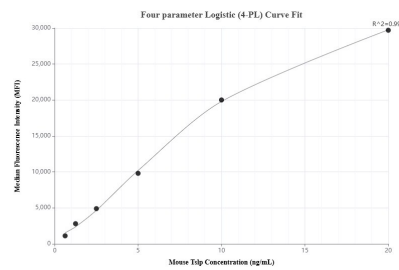
Serum of six mice was measured. The mouse Tslp concentration of detected samples was determined to be 0.60 ng/mL with a range of 0.35 - 0.89 ng/mL.



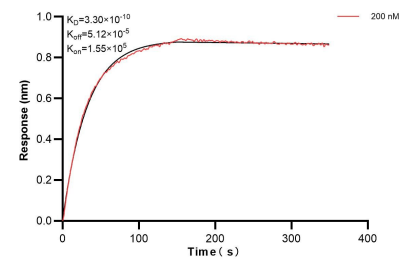
Sandwich ELISA standard curve of MP01963-1, Mouse Tslp Recombinant Matched Antibody Pair - PBS only. 85623-3-PBS was coated to a plate as the capture antibody and incubated with serial dilutions of standard Eg3312. 85623-1-PBS was HRP conjugated as the detection antibody. Range: 0.156-10 ng/mL



Cytometric bead array standard curve of MP01963-2, MOUSE Tslp Recombinant Matched Antibody Pair, PBS Only. Capture antibody: 85623-3-PBS. Detection antibody: 85623-2-PBS. Standard: Eg3312. Range: 0.625-40 ng/mL



Cytometric bead array standard curve of MP01963-1, MOUSE Tslp Recombinant Matched Antibody Pair, PBS Only. Capture antibody: 85623-3-PBS. Detection antibody: 85623-1-PBS. Standard: Eg3312. Range: 0.625-20 ng/mL



Biolayer interferometry (BLI) kinetic assay of 85623-3-PBS against Mouse Tslp was performed. The affinity constant is 0.33 nM.