

For Research Use Only

RNF20 Recombinant antibody, PBS Only (Capture/Detector)

Catalog Number: 85630-5-PBS



Basic Information

Catalog Number: 85630-5-PBS	GenBank Accession Number: BC110585	Purification Method: Protein A purification
Size: 100ug , Concentration: 1 mg/ml by Nanodrop;	GeneID (NCBI): 56254	CloneNo.: 243078F6
Source: Rabbit	UNIPROT ID: Q5VTR2	
Isotype: IgG	Full Name: ring finger protein 20	
Immunogen Catalog Number: AG16066	Calculated MW: 975 aa, 114 kDa	

Applications

Tested Applications:
Cytometric bead array, Sandwich ELISA, Indirect ELISA, Sample test

Species Specificity:
human

Product Information

85630-5-PBS targets RNF20 as part of a matched antibody pair:

MP02014-1: 85630-6-PBS capture and 85630-5-PBS detection (validated in Cytometric bead array)

MP02014-3: 85630-5-PBS capture and 85630-7-PBS detection (validated in Sandwich ELISA)

Unconjugated rabbit recombinant monoclonal antibody in PBS only (BSA and azide free) storage buffer at a concentration of 1 mg/mL, ready for conjugation. Created using Proteintech's proprietary in-house recombinant technology. Recombinant production enables unrivalled batch-to-batch consistency, easy scale-up, and future security of supply.

This conjugation ready format makes antibodies ideal for use in many applications including: ELISAs, multiplex assays requiring matched pairs, mass cytometry, and multiplex imaging applications. Antibody use should be optimized by the end user for each application and assay.

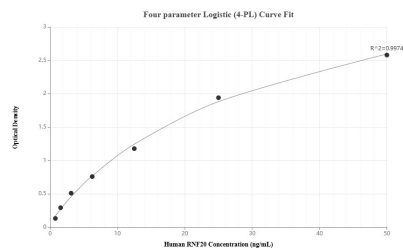
Storage

Storage:
Store at -80°C.
Storage Buffer:
PBS only, pH7.3

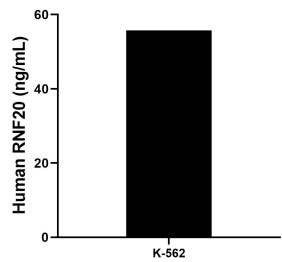
For technical support and original validation data for this product please contact:
T: 1 (888) 4PTGLAB (1-888-478-4522) (toll free in USA), or 1(312) 455-8498 (outside USA)
E: proteintech@ptglab.com
W: ptglab.com

This product is exclusively available under Proteintech Group brand and is not available to purchase from any other manufacturer.

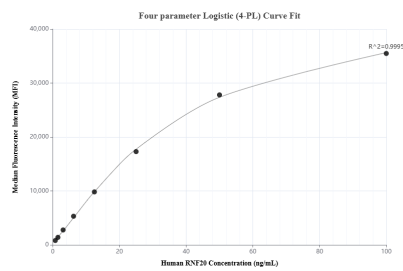
Selected Validation Data



Sandwich ELISA standard curve of MP02014-3, Human RNF20 Recombinant Matched Antibody Pair - PBS only. 85630-5-PBS was coated to a plate as the capture antibody and incubated with serial dilutions of standard Ag16066. 85630-7-PBS was HRP conjugated as the detection antibody. Range: 0.781-50 ng/mL



The mean RNF20 concentration was determined to be 55.74 ng/mL in K-562 cell extract based on a 2.5 mg/mL extract load.



Cytometric bead array standard curve of MP02014-1, RNF20 Recombinant Matched Antibody Pair, PBS Only. Capture antibody: 85630-6-PBS. Detection antibody: 85630-5-PBS. Standard: Ag16066. Range: 0.781-100 ng/mL