

For Research Use Only

# Mouse Il13ra2 Recombinant antibody, PBS Only (Capture)

Catalog Number: 85631-6-PBS



## Basic Information

<b>Catalog Number:</b> 85631-6-PBS	<b>GenBank Accession Number:</b> NM_008356.4	<b>Purification Method:</b> Protein A purification
<b>Size:</b> 100ug, Concentration: 1 mg/ml by Nanodrop;	<b>GeneID (NCBI):</b> 16165	<b>CloneNo.:</b> 242742C4
<b>Source:</b> Rabbit	<b>UNIPROT ID:</b> O88786-1	
<b>Isotype:</b> IgG	<b>Full Name:</b> interleukin 13 receptor, alpha 2	
<b>Immunogen Catalog Number:</b> EG3118	<b>Calculated MW:</b> 44 kDa	

## Applications

**Tested Applications:**  
Sandwich ELISA, Indirect ELISA, Sample test

**Species Specificity:**  
mouse

## Product Information

85631-6-PBS targets Il13ra2 as part of a matched antibody pair:

MP02013-3: 85631-6-PBS capture and 85631-5-PBS detection (validated in Sandwich ELISA)

Unconjugated rabbit recombinant monoclonal antibody in PBS only (BSA and azide free) storage buffer at a concentration of 1 mg/mL, ready for conjugation. Created using Proteintech's proprietary in-house recombinant technology. Recombinant production enables unrivalled batch-to-batch consistency, easy scale-up, and future security of supply.

This conjugation ready format makes antibodies ideal for use in many applications including: ELISAs, multiplex assays requiring matched pairs, mass cytometry, and multiplex imaging applications. Antibody use should be optimized by the end user for each application and assay.

## Storage

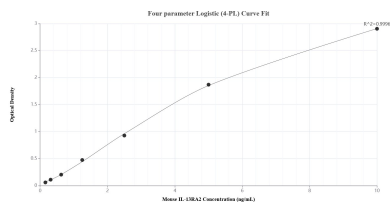
**Storage:**  
Store at -80°C.

**Storage Buffer:**  
PBS only, pH7.3

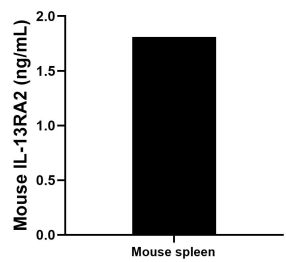
For technical support and original validation data for this product please contact:  
T: 1 (888) 4PTGLAB (1-888-478-4522) (toll free in USA), or 1(312) 455-8498 (outside USA)  
E: [proteintech@ptglab.com](mailto:proteintech@ptglab.com)  
W: [ptglab.com](http://ptglab.com)

This product is exclusively available under Proteintech Group brand and is not available to purchase from any other manufacturer.

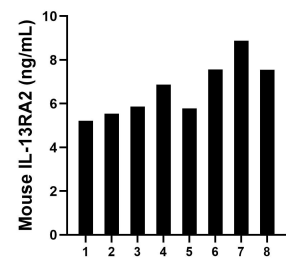
## Selected Validation Data



Sandwich ELISA standard curve of MP02013-3, Mouse IL-13RA2 Recombinant Matched Antibody Pair - PBS only. 85631-6-PBS was coated to a plate as the capture antibody and incubated with serial dilutions of standard Eg3118. 85631-5-PBS was HRP conjugated as the detection antibody. Range: 0.156-10 ng/mL



The mean IL-13RA2 concentration was determined to be 1.81 ng/mL in mouse spleen tissue homogenates extract based on a 2.30 mg/mL extract load.



Serum of eight mice was measured. The IL-13RA2 concentration of detected samples was determined to be 6.65 ng/mL with a range of 5.21-8.88 ng/mL