

For Research Use Only

POLR1A Recombinant antibody, PBS Only

Catalog Number: 85633-1-PBS



Basic Information

Catalog Number: 85633-1-PBS	GenBank Accession Number: BC017115	Purification Method: Protein A purification
Size: 100ug , Concentration: 1 mg/ml by Nanodrop;	GeneID (NCBI): 25885	CloneNo.: 243082E3
Source: Rabbit	UNIPROT ID: O95602	
Isotype: IgG	Full Name: polymerase (RNA) I polypeptide A, 194kDa	
Immunogen Catalog Number: AG14543	Calculated MW: 1720 aa, 195 kDa	
	Observed MW: 190-195 kDa	

Applications

Tested Applications:
WB, Indirect ELISA

Species Specificity:
human, mouse, rat

Background Information

POLR1A, DNA-directed RNA polymerase I subunit RPA1, is a DNA-dependent RNA polymerase catalyzes the transcription of DNA into RNA. RNA polymerase I (Pol I) located in the nucleolus and transcribes class I genes, which code for large ribosomal RNA. Different subunits of the Pol I transcription are targets of various physiological stimuli, which suggests that multiple signaling pathways are involved in carrying out Pol I transcription. Together with the second largest subunit, it is the catalytic core component of RNA polymerase I that synthesizes ribosomal RNA precursors.

Storage

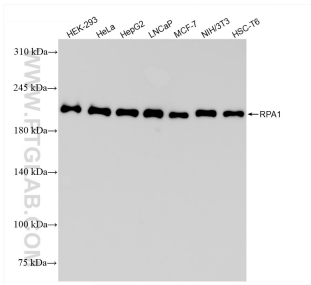
Storage:
Store at -80°C.

Storage Buffer:
PBS only, pH7.3

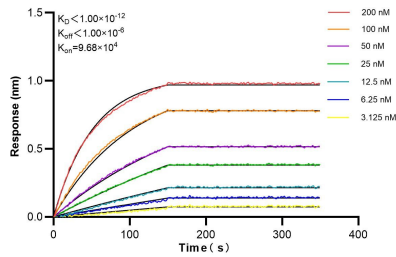
For technical support and original validation data for this product please contact:
T: 1 (888) 4PTGLAB (1-888-478-4522) (toll free in USA), or 1(312) 455-8498 (outside USA)
E: proteintech@ptglab.com
W: ptglab.com

This product is exclusively available under Proteintech Group brand and is not available to purchase from any other manufacturer.

Selected Validation Data



Various lysates were subjected to SDS PAGE followed by western blot with 85633-1-RR (POLR1A antibody) at dilution of 1:10000 incubated at room temperature for 1.5 hours. This data was developed using the same antibody clone with 85633-1-PBS in a different storage buffer formulation.



Biolayer interferometry (BLI) kinetic assays of 85633-1-RR against Human POLR1A were performed. The affinity constant is below 1 pM.