

For Research Use Only

# POLR1A Recombinant antibody

Catalog Number: 85633-1-RR



## Basic Information

<b>Catalog Number:</b> 85633-1-RR	<b>GenBank Accession Number:</b> BC017115	<b>Purification Method:</b> Protein A purification
<b>Size:</b> 100ul , Concentration: 1000 µg/ml by Nanodrop;	<b>GeneID (NCBI):</b> 25885	<b>CloneNo.:</b> 243082E3
<b>Source:</b> Rabbit	<b>UNIPROT ID:</b> O95602	<b>Recommended Dilutions:</b> WB 1:5000-1:50000
<b>Isotype:</b> IgG	<b>Full Name:</b> polymerase (RNA) I polypeptide A, 194kDa	
<b>Immunogen Catalog Number:</b> AG14543	<b>Calculated MW:</b> 1720 aa, 195 kDa	
	<b>Observed MW:</b> 190-195 kDa	

## Applications

<b>Tested Applications:</b> WB, ELISA	<b>Positive Controls:</b>
<b>Species Specificity:</b> human, mouse, rat	<b>WB :</b> HEK-293 cells, HeLa cells, HepG2 cells, LNCaP cells, MCF-7 cells, NIH/3T3 cells, HSC-T6 cells

## Background Information

POLR1A, DNA-directed RNA polymerase I subunit RPA1, is a DNA-dependent RNA polymerase catalyzes the transcription of DNA into RNA. RNA polymerase I (Pol I) located in the nucleolus and transcribes class I genes, which code for large ribosomal RNA. Different subunits of the Pol I transcription are targets of various physiological stimuli, which suggests that multiple signaling pathways are involved in carrying out Pol I transcription. Together with the second largest subunit, it is the catalytic core component of RNA polymerase I that synthesizes ribosomal RNA precursors.

## Storage

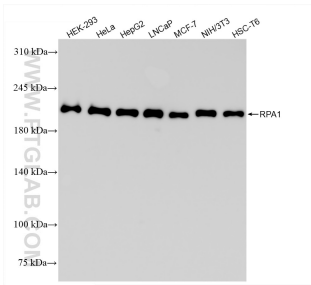
**Storage:**  
Store at -20°C. Stable for one year after shipment.  
**Storage Buffer:**  
PBS with 0.02% sodium azide and 50% glycerol, pH7.3  
Aliquoting is unnecessary for -20°C storage

\*\*\* 20ul sizes contain 0.1% BSA

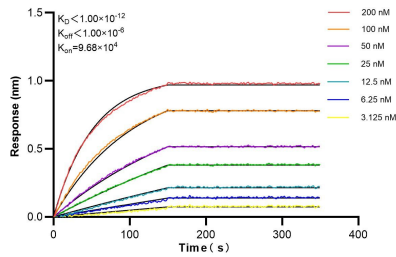
For technical support and original validation data for this product please contact:  
T: 1 (888) 4PTGLAB (1-888-478-4522) (toll free in USA), or 1(312) 455-8498 (outside USA)  
E: [proteintech@ptglab.com](mailto:proteintech@ptglab.com)  
W: [ptglab.com](http://ptglab.com)

This product is exclusively available under Proteintech Group brand and is not available to purchase from any other manufacturer.

# Selected Validation Data



Various lysates were subjected to SDS PAGE followed by western blot with 85633-1-RR (POLR1A antibody) at dilution of 1:10000 incubated at room temperature for 1.5 hours.



Biolayer interferometry (BLI) kinetic assays of 85633-1-RR against Human POLR1A were performed. The affinity constant is below 1 pM.