

For Research Use Only

Angiogenin Recombinant antibody, PBS Only (Capture)

Catalog Number: 85635-1-PBS



Basic Information

Catalog Number: 85635-1-PBS	GenBank Accession Number: BC054880	Purification Method: Protein A purification
Size: 100ug , Concentration: 1 mg/ml by Nanodrop;	GeneID (NCBI): 283	CloneNo.: 242738D1
Source: Rabbit	UNIPROT ID: P03950	
Isotype: IgG	Full Name: angiogenin, ribonuclease, RNase A family, 5	
Immunogen Catalog Number: EG1930	Calculated MW: 147 aa, 17 kDa	
	Observed MW: 14 kDa	

Applications

Tested Applications:
WB, IF/ICC, Cytometric bead array, Indirect ELISA

Species Specificity:
human

Product Information

85635-1-PBS targets Angiogenin as part of a matched antibody pair:

MP02050-1: 85635-1-PBS capture and 85635-2-PBS detection (validated in Cytometric bead array)

Unconjugated rabbit recombinant monoclonal antibody in PBS only (BSA and azide free) storage buffer at a concentration of 1 mg/mL, ready for conjugation. Created using Proteintech's proprietary in-house recombinant technology. Recombinant production enables unrivalled batch-to-batch consistency, easy scale-up, and future security of supply.

This conjugation ready format makes antibodies ideal for use in many applications including: ELISAs, multiplex assays requiring matched pairs, mass cytometry, and multiplex imaging applications. Antibody use should be optimized by the end user for each application and assay.

Background Information

Angiogenin (ANG), an angiogenic ribonuclease, is a member of the vertebrate-specific, secreted RNASE superfamily. Angiogenin, originally identified as a tumor angiogenic factor, was related with the growth and metastasis of numerous tumors. Angiogenin has been proposed as a permissive factor for angiogenesis induced by other angiogenic factors, including vascular endothelial growth factor (VEGF), basic fibroblast growth factor, acidic fibroblast growth factor, and epidermal growth factor. Angiogenin production and secretion may be stimulated by hypoxia. Increased angiogenin serum levels have been associated with the incidence and severity of several human tumors, including HCC. It is a 17 kDa precursor which is cleaved to generate the 14 kDa mature protein.

Storage

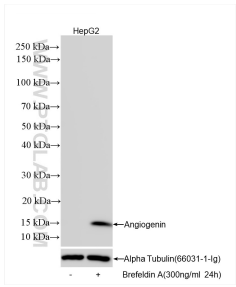
Storage:
Store at -80°C.

Storage Buffer:
PBS only, pH7.3

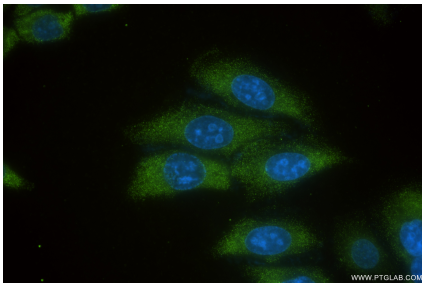
For technical support and original validation data for this product please contact:
T: 1 (888) 4PTGLAB (1-888-478-4522) (toll free in USA), or 1(312) 455-8498 (outside USA)
E: proteintech@ptglab.com
W: ptglab.com

This product is exclusively available under Proteintech Group brand and is not available to purchase from any other manufacturer.

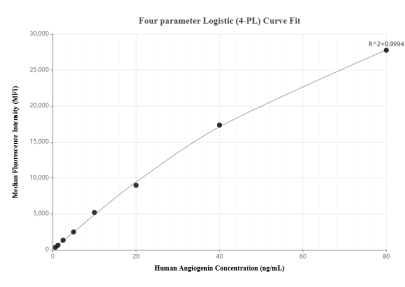
Selected Validation Data



Untreated and Brefeldin A treated HepG2 cells were subjected to SDS PAGE followed by western blot with 85635-1-RR (ANG antibody) at dilution of 1:2000 incubated at room temperature for 1.5 hours. This data was developed using the same antibody clone with 85635-1-PBS in a different storage buffer formulation.



Immunofluorescent analysis of (-20°C Ethanol) fixed HepG2 cells using ANG antibody (85635-1-RR, Clone: 242738D1) at dilution of 1:400 and CoraLite® 488-Conjugated Goat Anti-Rabbit IgG(H+L) (SA00013-2). This data was developed using the same antibody clone with 85635-1-PBS in a different storage buffer formulation.



Cytometric bead array standard curve of MP02050-1, Angiogenin Recombinant Matched Antibody Pair, PBS Only. Capture antibody: 85635-1-PBS. Detection antibody: 85635-2-PBS. Standard: Eg1930. Range: 0.625-80 ng/mL.