

For Research Use Only

Angiogenin Recombinant antibody

Catalog Number: 85635-1-RR



Basic Information

Catalog Number: 85635-1-RR	GenBank Accession Number: BC054880	Purification Method: Protein A purification
Size: 100ul , Concentration: 1000 µg/ml by Nanodrop;	GeneID (NCBI): 283	CloneNo.: 242738D1
Source: Rabbit	UNIPROT ID: P03950	Recommended Dilutions: WB 1:1000-1:4000 IF/ICC 1:200-1:800
Isotype: IgG	Full Name: angiogenin, ribonuclease, RNase A family, 5	
Immunogen Catalog Number: EG1930	Calculated MW: 147 aa, 17 kDa	
	Observed MW: 14 kDa	

Applications

Tested Applications: WB, IF/ICC, ELISA	Positive Controls:
Species Specificity: human	WB : Brefeldin A treated HepG2 cells, IF/ICC : HepG2 cells,

Background Information

Angiogenin (ANG), an angiogenic ribonuclease, is a member of the vertebrate-specific, secreted RNASE superfamily. Angiogenin, originally identified as a tumor angiogenic factor, was related with the growth and metastasis of numerous tumors. Angiogenin has been proposed as a permissive factor for angiogenesis induced by other angiogenic factors, including vascular endothelial growth factor (VEGF), basic fibroblast growth factor, acidic fibroblast growth factor, and epidermal growth factor. Angiogenin production and secretion may be stimulated by hypoxia. Increased angiogenin serum levels have been associated with the incidence and severity of several human tumors, including HCC. It is a 17 kDa precursor which is cleaved to generate the 14 kDa mature protein.

Storage

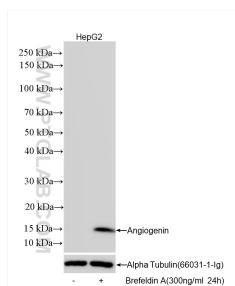
Storage:
Store at -20°C. Stable for one year after shipment.
Storage Buffer:
PBS with 0.02% sodium azide and 50% glycerol, pH7.3
Aliquoting is unnecessary for -20°C storage

*** 20ul sizes contain 0.1% BSA

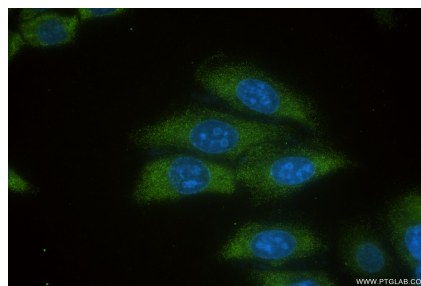
For technical support and original validation data for this product please contact:
T: 1 (888) 4PTGLAB (1-888-478-4522) (toll free in USA), or 1(312) 455-8498 (outside USA)
E: proteintech@ptglab.com
W: ptglab.com

This product is exclusively available under Proteintech Group brand and is not available to purchase from any other manufacturer.

Selected Validation Data



Untreated and Brefeldin A treated HepG2 cells were subjected to SDS PAGE followed by western blot with 85635-1-RR (ANG antibody) at dilution of 1:2000 incubated at room temperature for 1.5 hours.



Immunofluorescent analysis of (-20°C Ethanol) fixed HepG2 cells using ANG antibody (85635-1-RR, Clone: 242738D1) at dilution of 1:400 and CoraLite® 488-Conjugated Goat Anti-Rabbit IgG(H+L) (SA00013-2).