

For Research Use Only

# ANG Recombinant antibody, PBS Only (Capture)

Catalog Number: 85635-3-PBS



## Basic Information

<b>Catalog Number:</b> 85635-3-PBS	<b>GenBank Accession Number:</b> BC054880	<b>Purification Method:</b> Protein A purification
<b>Size:</b> 100ug , Concentration: 1 mg/ml by Nanodrop;	<b>GeneID (NCBI):</b> 283	<b>CloneNo.:</b> 242738A7
<b>Source:</b> Rabbit	<b>UNIPROT ID:</b> P03950	
<b>Isotype:</b> IgG	<b>Full Name:</b> angiogenin, ribonuclease, RNase A family, 5	
	<b>Calculated MW:</b> 147 aa, 17 kDa	

## Applications

**Tested Applications:**  
Cytometric bead array, Sandwich ELISA, Indirect ELISA, Sample test

**Species Specificity:**  
human

## Product Information

85635-3-PBS targets ANG as part of a matched antibody pair:

MP02050-2: 85635-3-PBS capture and 85635-2-PBS detection (validated in Cytometric bead array)

MP02050-3: 85635-3-PBS capture and 85635-4-PBS detection (validated in Sandwich ELISA)

Unconjugated rabbit recombinant monoclonal antibody in PBS only (BSA and azide free) storage buffer at a concentration of 1 mg/mL, ready for conjugation. Created using Proteintech's proprietary in-house recombinant technology. Recombinant production enables unrivalled batch-to-batch consistency, easy scale-up, and future security of supply.

This conjugation ready format makes antibodies ideal for use in many applications including: ELISAs, multiplex assays requiring matched pairs, mass cytometry, and multiplex imaging applications. Antibody use should be optimized by the end user for each application and assay.

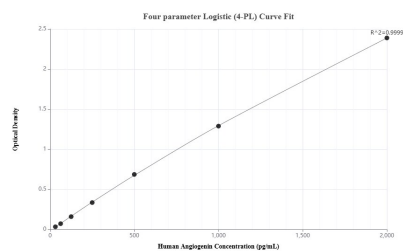
## Storage

**Storage:**  
Store at -80°C.  
**Storage Buffer:**  
PBS Only

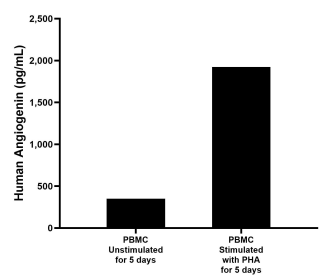
For technical support and original validation data for this product please contact:  
T: 1 (888) 4PTGLAB (1-888-478-4522) (toll free in USA), or 1(312) 455-8498 (outside USA)  
E: proteintech@ptglab.com  
W: ptglab.com

This product is exclusively available under Proteintech Group brand and is not available to purchase from any other manufacturer.

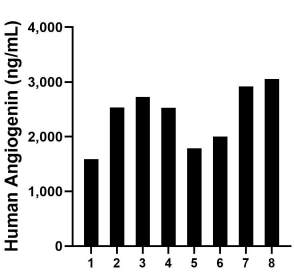
## Selected Validation Data



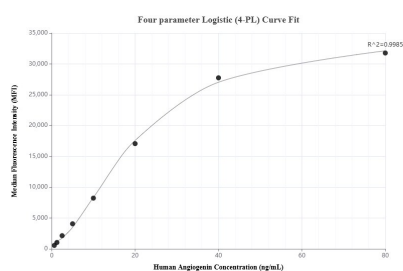
Sandwich ELISA standard curve of MP02050-3, Human Angiogenin Recombinant Matched Antibody Pair - PBS only. 85635-3-PBS was coated to a plate as the capture antibody and incubated with serial dilutions of standard Eg1930. 85635-4-PBS was HRP conjugated as the detection antibody. Range: 39.1-2500 pg/mL



Human peripheral blood mononuclear cells (PBMC) were cultured unstimulated or stimulated with 10  $\mu$ g/mL PHA for 5 days. The mean Angiogenin concentration was determined to be 350.15 pg/mL in unstimulated PBMC supernatant, 1,922.45 pg/mL in PHA stimulated PBMC supernatant.



Serum of eight individual healthy human donors was measured. The human Angiogenin concentration of detected samples was determined to be 2,391.69 ng/mL with a range of 1,589.9-3,053.2 ng/mL.



Cytometric bead array standard curve of MP02050-2, Angiogenin Recombinant Matched Antibody Pair, PBS Only. Capture antibody: 85635-3-PBS. Detection antibody: 85635-2-PBS. Standard: Eg1930. Range: 0.625-80 ng/mL