

For Research Use Only

ANG Recombinant antibody, PBS Only (Detector)

Catalog Number: 85635-4-PBS



Basic Information

Catalog Number: 85635-4-PBS	GenBank Accession Number: BC054880	Purification Method: Protein A purification
Size: 100ug , Concentration: 1 mg/ml by Nanodrop;	GeneID (NCBI): 283	CloneNo.: 242738A12
Source: Rabbit	UNIPROT ID: P03950	
Isotype: IgG	Full Name: angiogenin, ribonuclease, RNase A family, 5	
	Calculated MW: 147 aa, 17 kDa	

Applications

Tested Applications:
Sandwich ELISA, Indirect ELISA, Sample test

Species Specificity:
human

Product Information

85635-4-PBS targets ANG as part of a matched antibody pair.

MP02050-3: 85635-3-PBS capture and 85635-4-PBS detection (validated in Sandwich ELISA)

Unconjugated rabbit recombinant monoclonal antibody in PBS only (BSA and azide free) storage buffer at a concentration of 1 mg/mL, ready for conjugation. Created using Proteintech's proprietary in-house recombinant technology. Recombinant production enables unrivalled batch-to-batch consistency, easy scale-up, and future security of supply.

This conjugation ready format makes antibodies ideal for use in many applications including: ELISAs, multiplex assays requiring matched pairs, mass cytometry, and multiplex imaging applications. Antibody use should be optimized by the end user for each application and assay.

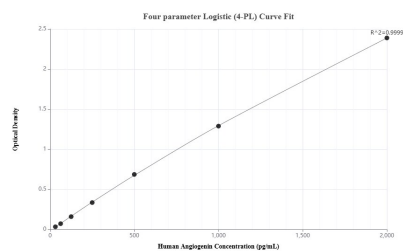
Storage

Storage:
Store at -80°C.
Storage Buffer:
PBS Only

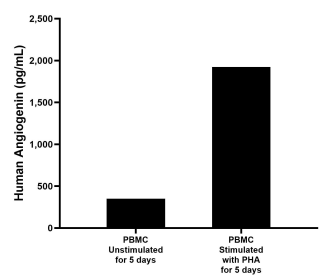
For technical support and original validation data for this product please contact:
T: 1 (888) 4PTGLAB (1-888-478-4522) (toll free in USA), or 1(312) 455-8498 (outside USA)
E: proteintech@ptglab.com
W: ptglab.com

This product is exclusively available under Proteintech Group brand and is not available to purchase from any other manufacturer.

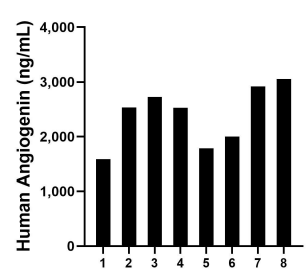
Selected Validation Data



Sandwich ELISA standard curve of MP02050-3, Human Angiogenin Recombinant Matched Antibody Pair - PBS only. 85635-3-PBS was coated to a plate as the capture antibody and incubated with serial dilutions of standard Eg1930. 85635-4-PBS was HRP conjugated as the detection antibody. Range: 39.1-2500 pg/mL



Human peripheral blood mononuclear cells (PBMC) were cultured unstimulated or stimulated with 10 µg/mL PHA for 5 days. The mean Angiogenin concentration was determined to be 350.15 pg/mL in unstimulated PBMC supernatant, 1,922.45 pg/mL in PHA stimulated PBMC supernatant.



Serum of eight individual healthy human donors was measured. The human Angiogenin concentration of detected samples was determined to be 2,391.69 ng/mL with a range of 1,589.9-3,053.2 ng/mL.