

For Research Use Only

Centrin 1 Recombinant monoclonal antibody

Catalog Number: 85637-2-RR



Basic Information

Catalog Number: 85637-2-RR	GenBank Accession Number: BC029515	Purification Method: Protein A purification
Size: 100ul , Concentration: 1000 µg/ml by Nanodrop;	GeneID (NCBI): 1068	CloneNo.: 243013C4
Source: Rabbit	UNIPROT ID: Q12798	Recommended Dilutions: WB: 1:500-1:2000
Isotype: IgG	Full Name: centrin, EF-hand protein, 1	
Immunogen Catalog Number: AG3529	Calculated MW: 172 aa, 20 kDa	
	Observed MW: 20 kDa	

Applications

Tested Applications: WB, ELISA	Positive Controls: WB : human testis tissue, mouse testis tissue, rat testis tissue
Species Specificity: human, mouse, rat	

Background Information

EF-hand type Ca²⁺-binding proteins consists of several family members, including Centrin-1, Centrin-2 and Centrin-3. The Centrin proteins are ubiquitously expressed cytoskeletal components that show increased expression during cell differentiation. Centrin-1 plays important roles in the determination of centrosome position and segregation, and in the process of microtubule severing. Centrin-1 is localized to the centrosome of interphase cells, and redistributes to the region of the spindle poles during mitosis, reflecting the dynamic behavior of the centrosome during the cell cycle.

Storage

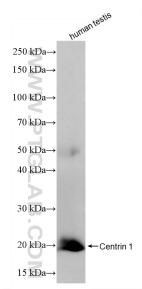
Storage:
Store at -20°C. Stable for one year after shipment.
Storage Buffer:
PBS with 0.02% sodium azide and 50% glycerol, pH7.3
Aliquoting is unnecessary for -20°C storage

*** 20ul sizes contain 0.1% BSA

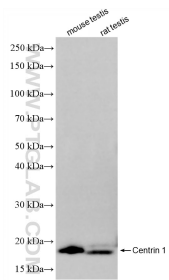
For technical support and original validation data for this product please contact:
T: 1 (888) 4PTGLAB (1-888-478-4522) (toll free in USA), or 1(312) 455-8498 (outside USA)
E: proteintech@ptglab.com
W: ptglab.com

This product is exclusively available under Proteintech Group brand and is not available to purchase from any other manufacturer.

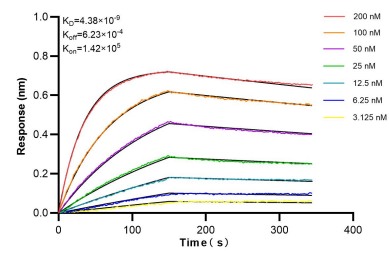
Selected Validation Data



Human testis tissue was subjected to SDS PAGE followed by western blot with 85637-2-RR (CETN1 antibody) at dilution of 1:1000 incubated at room temperature for 1.5 hours.



Various lysates were subjected to SDS PAGE followed by western blot with 85637-2-RR (CETN1 antibody) at dilution of 1:1000 incubated at room temperature for 1.5 hours.



Biolayer interferometry (BLI) kinetic assays of 85637-2-RR against Human Centrin 1 were performed. The affinity constant is 4.38 nM.