

For Research Use Only

SF3B1 Recombinant antibody, PBS Only (Capture)

Catalog Number: 85640-3-PBS



Basic Information

Catalog Number: 85640-3-PBS	GenBank Accession Number: NM_012433	Purification Method: Protein A purification
Size: 100ug , Concentration: 1 mg/ml by Nanodrop;	GeneID (NCBI): 23451	CloneNo.: 243145C8
Source: Rabbit	UNIPROT ID: O75533	
Isotype: IgG	Full Name: splicing factor 3b, subunit 1, 155kDa	
Immunogen Catalog Number: AG26689	Calculated MW: 146 kDa	

Applications

Tested Applications:
Cytometric bead array, Sandwich ELISA, Indirect ELISA, Sample test

Species Specificity:
human

Product Information

85640-3-PBS targets SF3B1 as part of a matched antibody pair:

MP02058-1: 85640-3-PBS capture and 85640-1-PBS detection (validated in Cytometric bead array)

MP02058-2: 85640-3-PBS capture and 85640-2-PBS detection (validated in Cytometric bead array)

MP02058-3: 85640-3-PBS capture and 85640-4-PBS detection (validated in Sandwich ELISA)

Unconjugated rabbit recombinant monoclonal antibody in PBS only (BSA and azide free) storage buffer at a concentration of 1 mg/mL, ready for conjugation. Created using Proteintech's proprietary in-house recombinant technology. Recombinant production enables unrivalled batch-to-batch consistency, easy scale-up, and future security of supply.

This conjugation ready format makes antibodies ideal for use in many applications including: ELISAs, multiplex assays requiring matched pairs, mass cytometry, and multiplex imaging applications. Antibody use should be optimized by the end user for each application and assay.

Storage

Storage:
Store at -80°C.

Storage Buffer:
PBS Only

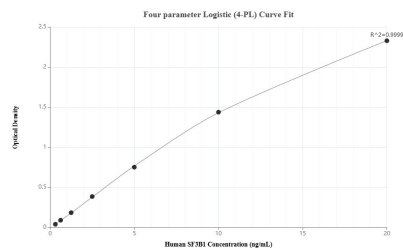
For technical support and original validation data for this product please contact:

T: 1 (888) 4PTGLAB (1-888-478-4522) (toll free in USA), or 1(312) 455-8498 (outside USA)

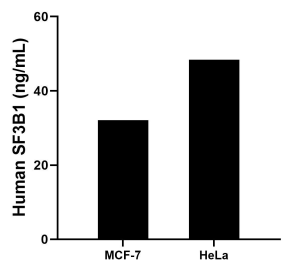
E: proteintech@ptglab.com
W: ptglab.com

This product is exclusively available under Proteintech Group brand and is not available to purchase from any other manufacturer.

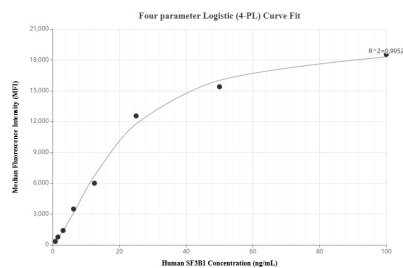
Selected Validation Data



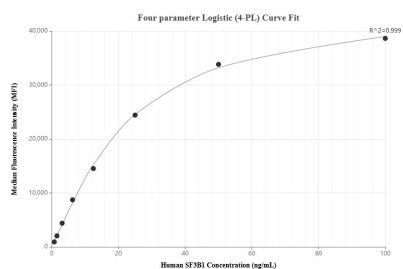
Sandwich ELISA standard curve of MP02058-3, Human SF3B1 Recombinant Matched Antibody Pair - PBS only. 85640-3-PBS was coated to a plate as the capture antibody and incubated with serial dilutions of standard Ag26689. 85640-4-PBS was HRP conjugated as the detection antibody. Range: 0.313-20 ng/mL



The mean SF3B1 concentration was determined to be 32.11 ng/mL in MCF-7 cell extract based on a 1.3 mg/mL extract load and 48.40 ng/mL in HeLa cell extract based on a 1.8 mg/mL extract load.



Cytometric bead array standard curve of MP02058-2, SF3B1 Recombinant Matched Antibody Pair, PBS Only. Capture antibody: 85640-3-PBS. Detection antibody: 85640-2-PBS. Standard: Ag26689. Range: 0.781-100 ng/mL



Cytometric bead array standard curve of MP02058-1, SF3B1 Recombinant Matched Antibody Pair, PBS Only. Capture antibody: 85640-3-PBS. Detection antibody: 85640-1-PBS. Standard: Ag26689. Range: 0.781-100 ng/mL