

For Research Use Only

SF3B1 Recombinant antibody, PBS Only (Detector)

Catalog Number: 85640-4-PBS



Basic Information

Catalog Number: 85640-4-PBS	GenBank Accession Number: NM_012433	Purification Method: Protein A purification
Size: 100ug , Concentration: 1 mg/ml by Nanodrop;	GeneID (NCBI): 23451	CloneNo.: 243145C6
Source: Rabbit	UNIPROT ID: O75533	
Isotype: IgG	Full Name: splicing factor 3b, subunit 1, 155kDa	
Immunogen Catalog Number: AG26689	Calculated MW: 146 kDa	
	Observed MW: 146 kDa	

Applications

Tested Applications:
WB, Sandwich ELISA, Indirect ELISA, Sample test

Species Specificity:
human, mouse, rat

Product Information

85640-4-PBS targets SF3B1 as part of a matched antibody pair:

MP02058-3: 85640-3-PBS capture and 85640-4-PBS detection (validated in Sandwich ELISA)

Unconjugated rabbit recombinant monoclonal antibody in PBS only (BSA and azide free) storage buffer at a concentration of 1 mg/mL, ready for conjugation. Created using Proteintech's proprietary in-house recombinant technology. Recombinant production enables unrivalled batch-to-batch consistency, easy scale-up, and future security of supply.

This conjugation ready format makes antibodies ideal for use in many applications including: ELISAs, multiplex assays requiring matched pairs, mass cytometry, and multiplex imaging applications. Antibody use should be optimized by the end user for each application and assay.

Background Information

SF3B1, also named as SAP155, is a 1304 amino acid protein, which belongs to the SF3B1 family. SF3B1 is a subunit of the splicing factor SF3B required for 'A' complex assembly formed by the stable binding of U2 snRNP to the branchpoint sequence (BPS) in pre-mRNA. Sequence independent binding of SF3A/SF3B complex upstream of the branch site is essential, it may anchor U2 snRNP to the pre-mRNA. SF3B1 may also be involved in the assembly of the 'E' complex. SF3B1 belongs also to the minor U12-dependent spliceosome, which is involved in the splicing of rare class of nuclear pre-mRNA intron.

Storage

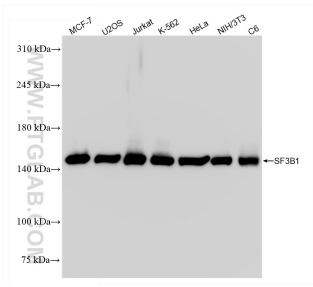
Storage:
Store at -80°C.

Storage Buffer:
PBS only

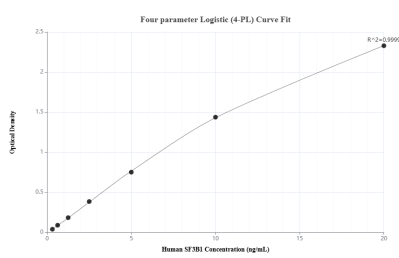
For technical support and original validation data for this product please contact:
T: 1 (888) 4PTGLAB (1-888-478-4522) (toll free in USA), or 1(312) 455-8498 (outside USA)
E: proteintech@ptglab.com
W: ptglab.com

This product is exclusively available under Proteintech Group brand and is not available to purchase from any other manufacturer.

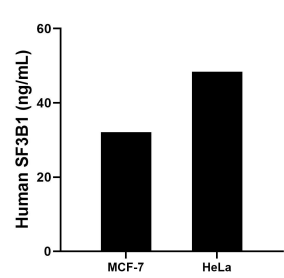
Selected Validation Data



Various lysates were subjected to SDS PAGE followed by western blot with 85640-4-RR (SF3B1 antibody) at dilution of 1:10000 incubated at room temperature for 1.5 hours. This data was developed using the same antibody clone with 85640-4-PBS in a different storage buffer formulation.



Sandwich ELISA standard curve of MP02058-3, Human SF3B1 Recombinant Matched Antibody Pair - PBS only. 85640-3-PBS was coated to a plate as the capture antibody and incubated with serial dilutions of standard Ag26689. 85640-4-PBS was HRP conjugated as the detection antibody. Range: 0.313-20 ng/mL



The mean SF3B1 concentration was determined to be 32.11 ng/mL in MCF-7 cell extract based on a 1.3 mg/mL extract load and 48.40 ng/mL in HeLa cell extract based on a 1.8 mg/mL extract load.