

For Research Use Only

THOC1 Recombinant antibody, PBS Only (Detector)

Catalog Number: 85642-3-PBS



Basic Information

Catalog Number: 85642-3-PBS	GenBank Accession Number: BC010381	Purification Method: Protein A purification
Size: 100ug , Concentration: 1 mg/ml by Nanodrop;	GeneID (NCBI): 9984	CloneNo.: 243161H5
Source: Rabbit	UNIPROT ID: Q96FV9	
Isotype: IgG	Full Name: THO complex 1	
Immunogen Catalog Number: AG1352	Calculated MW: 84 kDa	

Applications

Tested Applications:
Cytometric bead array, Sandwich ELISA, Indirect ELISA, Sample test

Species Specificity:
human

Product Information

85642-3-PBS targets THOC1 as part of a matched antibody pair:

MP02063-1: 85642-4-PBS capture and 85642-3-PBS detection (validated in Cytometric bead array)

MP02063-3: 85642-6-PBS capture and 85642-3-PBS detection (validated in Sandwich ELISA)

Unconjugated rabbit recombinant monoclonal antibody in PBS only (BSA and azide free) storage buffer at a concentration of 1 mg/mL, ready for conjugation. Created using Proteintech's proprietary in-house recombinant technology. Recombinant production enables unrivalled batch-to-batch consistency, easy scale-up, and future security of supply.

This conjugation ready format makes antibodies ideal for use in many applications including: ELISAs, multiplex assays requiring matched pairs, mass cytometry, and multiplex imaging applications. Antibody use should be optimized by the end user for each application and assay.

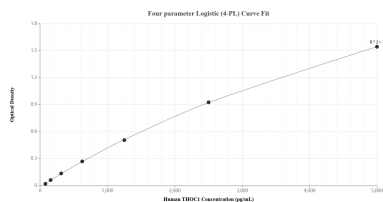
Storage

Storage:
Store at -80°C.
Storage Buffer:
PBS Only

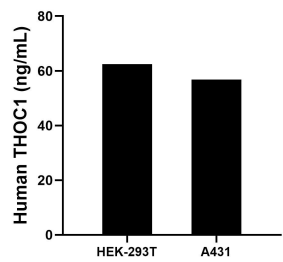
For technical support and original validation data for this product please contact:
T: 1 (888) 4PTGLAB (1-888-478-4522) (toll free in USA), or 1(312) 455-8498 (outside USA)
E: proteintech@ptglab.com
W: ptglab.com

This product is exclusively available under Proteintech Group brand and is not available to purchase from any other manufacturer.

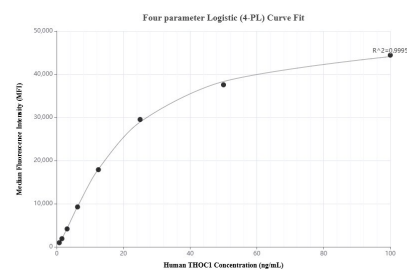
Selected Validation Data



Sandwich ELISA standard curve of MP02063-3, Human THOC1 Recombinant Matched Antibody Pair - PBS only. 85642-6-PBS was coated to a plate as the capture antibody and incubated with serial dilutions of standard Ag1352. 85642-3-PBS was HRP conjugated as the detection antibody. Range: 78.1-5000 pg/mL.



The mean THOC1 concentration was determined to be 62.5 ng/mL in HEK-293T cell extract based on a 3.2 mg/mL extract load and 56.8 ng/mL in A431 cell extract based on a 3.7 mg/mL extract load.



Cytometric bead array standard curve of MP02063-1, THOC1 Recombinant Matched Antibody Pair, PBS Only. Capture antibody: 85642-4-PBS. Detection antibody: 85642-3-PBS. Standard: Ag1352. Range: 0.781-100 ng/mL.