

For Research Use Only

Mouse Complement factor D Recombinant antibody, PBS Only

Catalog Number: 85643-4-PBS



Basic Information

Catalog Number:

85643-4-PBS

Size:

100ug, Concentration: 1 mg/ml by
Nanodrop;

Source:

Rabbit

Isotype:

IgG

GenBank Accession Number:

NM_013459.4

GeneID (NCBI):

11537

UNIPROT ID:

P03953-1

Full Name:

complement factor D (adipsin)

Calculated MW:

28 kDa

Observed MW:

40-50 kDa

Purification Method:

Protein A purification

CloneNo.:

242744B4

Applications

Tested Applications:

WB, Indirect ELISA

Species Specificity:

mouse

Background Information

Complement factor D, also known as adipsin, is a highly specific serine protease. Complement factor D is the rate-limiting enzyme in the alternative pathway of complement. It activates C3 convertase by cleaving factor B, which is a key step in the alternative pathway. Complement factor D catalyzes the cleavage of factor B to generate Ba (non-catalytic chain) and Bb (active catalytic subunit), which together with C3(H₂O) (or C3b) constitute the active C3 convertase C3(H₂O)Bb (or C3bBb). (PMID: 34566967; PMID: 27775713).

Storage

Storage:

Store at -80°C.

Storage Buffer:

PBS only

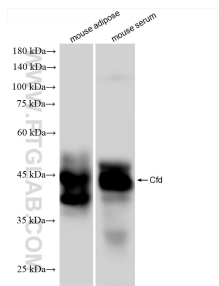
For technical support and original validation data for this product please contact:

T: 1 (888) 4PTGLAB (1-888-478-4522) (toll free
in USA), or 1(312) 455-8498 (outside USA)

E: proteintech@ptglab.com
W: ptglab.com

This product is exclusively available under Proteintech Group brand and is not available to purchase from any other manufacturer.

Selected Validation Data



Various lysates were subjected to SDS PAGE followed by western blot with 85643-4-RR (Cfd antibody) at dilution of 1:5000 incubated at room temperature for 1.5 hours. This data was developed using the same antibody clone with 85643-4-PBS in a different storage buffer formulation.