

For Research Use Only

# Complement factor D Recombinant antibody

Catalog Number: 85643-4-RR



## Basic Information

<b>Catalog Number:</b> 85643-4-RR	<b>GenBank Accession Number:</b> NM_013459.4	<b>Purification Method:</b> Protein A purification
<b>Size:</b> 100ul , Concentration: 1000 µg/ml by Nanodrop;	<b>GeneID (NCBI):</b> 11537	<b>CloneNo.:</b> 242744B4
<b>Source:</b> Rabbit	<b>UNIPROT ID:</b> P03953-1	<b>Recommended Dilutions:</b> WB 1:2000-1:10000
<b>Isotype:</b> IgG	<b>Full Name:</b> complement factor D (adipsin)	
	<b>Calculated MW:</b> 28 kDa	
	<b>Observed MW:</b> 40-50 kDa	

## Applications

<b>Tested Applications:</b> WB, ELISA	<b>Positive Controls:</b> WB : mouse adipose tissue, mouse serum
<b>Species Specificity:</b> mouse	

## Background Information

Complement factor D, also known as adipsin, is a highly specific serine protease. Complement factor D is the rate-limiting enzyme in the alternative pathway of complement. It activates C3 convertase by cleaving factor B, which is a key step in the alternative pathway. Complement factor D catalyzes the cleavage of factor B to generate Ba (non-catalytic chain) and Bb (active catalytic subunit), which together with C3(H<sub>2</sub>O) (or C3b) constitute the active C3 convertase C3(H<sub>2</sub>O)Bb (or C3bBb). (PMID: 34566967; PMID: 27775713).

## Storage

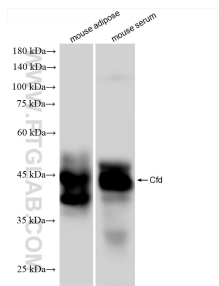
**Storage:**  
Store at -20°C. Stable for one year after shipment.  
**Storage Buffer:**  
PBS with 0.02% sodium azide and 50% glycerol  
Aliquoting is unnecessary for -20°C storage

\*\*\* 20ul sizes contain 0.1% BSA

For technical support and original validation data for this product please contact:  
T: 1 (888) 4PTGLAB (1-888-478-4522) (toll free in USA), or 1(312) 455-8498 (outside USA)  
E: proteintech@ptglab.com  
W: ptglab.com

This product is exclusively available under Proteintech Group brand and is not available to purchase from any other manufacturer.

## Selected Validation Data



Various lysates were subjected to SDS PAGE followed by western blot with 85643-4-RR (Cfd antibody) at dilution of 1:5000 incubated at room temperature for 1.5 hours.