

For Research Use Only

# SNRPA1 Recombinant antibody, PBS Only

Catalog Number: 85649-2-PBS



## Basic Information

<b>Catalog Number:</b> 85649-2-PBS	<b>GenBank Accession Number:</b> BC022816	<b>Purification Method:</b> Protein A purification
<b>Size:</b> 100ug , Concentration: 1 mg/ml by Nanodrop;	<b>GeneID (NCBI):</b> 6627	<b>CloneNo.:</b> 243097D9
<b>Source:</b> Rabbit	<b>UNIPROT ID:</b> P09661	
<b>Isotype:</b> IgG	<b>Full Name:</b> small nuclear ribonucleoprotein polypeptide A'	
<b>Immunogen Catalog Number:</b> AG10790	<b>Calculated MW:</b> 255 aa, 28 kDa	
	<b>Observed MW:</b> 28 kDa	

## Applications

**Tested Applications:**  
WB, IF/ICC, Indirect ELISA

**Species Specificity:**  
human, mouse, rat

## Background Information

Small nuclear ribonucleoprotein polypeptide a-prime(SNRPA1) is part of the U2 snRNP particle, which associated with the branch point of the lariat-shaped intron, in intermediate in the cascade of mRNA precursor splicing event. It may be required for cell division, and helps the A' protein to bind stem loop IV of U2 snRNA. This is a rabbit polyclonal antibody raised against the full length SNRPA1 of human origin.

## Storage

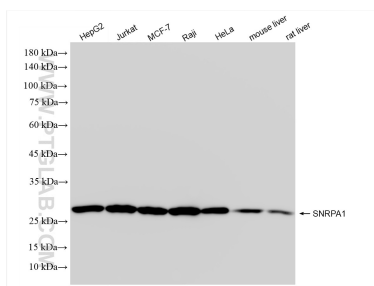
**Storage:**  
Store at -80°C.

**Storage Buffer:**  
PBS Only

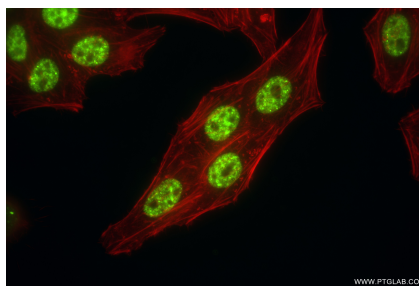
For technical support and original validation data for this product please contact:  
T: 1 (888) 4PTGLAB (1-888-478-4522) (toll free in USA), or 1(312) 455-8498 (outside USA)  
E: [proteintech@ptglab.com](mailto:proteintech@ptglab.com)  
W: [ptglab.com](http://ptglab.com)

This product is exclusively available under Proteintech Group brand and is not available to purchase from any other manufacturer.

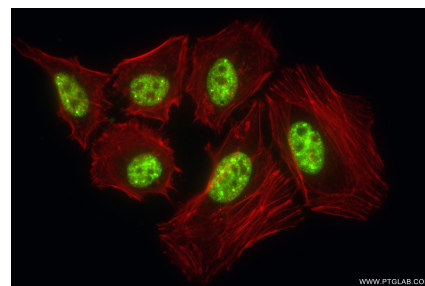
## Selected Validation Data



Various lysates were subjected to SDS PAGE followed by western blot with 85649-2-RR (SNRPA1 antibody) at dilution of 1:10000 incubated at room temperature for 1.5 hours. This data was developed using the same antibody clone with 85649-2-PBS in a different storage buffer formulation.



Immunofluorescent analysis of (4% PFA) fixed HepG2 cells using SNRPA1 antibody (85649-2-RR, Clone: 243097D9) at dilution of 1:1000 and CoraLite® 488-Conjugated Goat Anti-Rabbit IgG(H+L) (SA00013-2), CL594-Phalloidin (red). This data was developed using the same antibody clone with 85649-2-PBS in a different storage buffer formulation.



Immunofluorescent analysis of (4% PFA) fixed HeLa cells using SNRPA1 antibody (85649-2-RR, Clone: 243097D9) at dilution of 1:1000 and CoraLite® 488-Conjugated Goat Anti-Rabbit IgG(H+L) (SA00013-2), CL594-Phalloidin (red). This data was developed using the same antibody clone with 85649-2-PBS in a different storage buffer formulation.