

For Research Use Only

C8G Recombinant antibody, PBS Only

Catalog Number: 85652-1-PBS



Basic Information

Catalog Number: 85652-1-PBS	GenBank Accession Number: BC113626	Purification Method: Protein A purification
Size: 100ug, Concentration: 1 mg/ml by Nanodrop;	GeneID (NCBI): 733	CloneNo.: 242479G11
Source: Rabbit	UNIPROT ID: P07360	
Isotype: IgG	Full Name: complement component 8, gamma polypeptide	
Immunogen Catalog Number: AG18261	Calculated MW: 202 aa, 22 kDa	
	Observed MW: 18-22 kDa	

Applications

Tested Applications:
WB, Indirect ELISA

Species Specificity:
human

Background Information

The gamma chain of complement component 8 (C8G) is one of three different subunits (alpha, beta, and gamma) of the eighth complement component (C8), which is a component of the MAC (membrane attack complex) (PMID:33382892). Although the roles of C8A and C8B are directly associated with MAC formation, C8G is not essential in the assembly and activity of the MAC (PMID:11960635). Moreover, C8G was shown to inhibit neuroinflammation by interfering with the sphingosine-1-phosphate (S1P)-S1PR2 interaction (PMID:34149451).

Storage

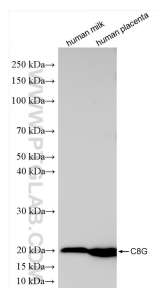
Storage:
Store at -80°C.

Storage Buffer:
PBS only, pH7.3

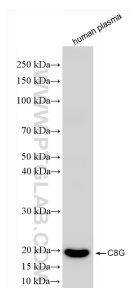
For technical support and original validation data for this product please contact:
T: 1 (888) 4PTGLAB (1-888-478-4522) (toll free in USA), or 1(312) 455-8498 (outside USA)
E: proteintech@ptglab.com
W: ptglab.com

This product is exclusively available under Proteintech Group brand and is not available to purchase from any other manufacturer.

Selected Validation Data



Various lysates were subjected to SDS PAGE followed by western blot with 85652-1-RR (C8G antibody) at dilution of 1:1000 incubated at room temperature for 1.5 hours. This data was developed using the same antibody clone with 85652-1-PBS in a different storage buffer formulation.



human plasma were subjected to SDS PAGE followed by western blot with 85652-1-RR (C8G antibody) at dilution of 1:1000 incubated at room temperature for 1.5 hours. This data was developed using the same antibody clone with 85652-1-PBS in a different storage buffer formulation.