

For Research Use Only

C8G Recombinant antibody

Catalog Number: 85652-1-RR



Basic Information

Catalog Number: 85652-1-RR	GenBank Accession Number: BC113626	Purification Method: Protein A purification
Size: 100ul , Concentration: 1000 µg/ml by Nanodrop;	GeneID (NCBI): 733	CloneNo.: 242479G11
Source: Rabbit	UNIPROT ID: P07360	Recommended Dilutions: WB 1:500-1:2000
Isotype: IgG	Full Name: complement component 8, gamma polypeptide	
Immunogen Catalog Number: AG18261	Calculated MW: 202 aa, 22 kDa	
	Observed MW: 18-22 kDa	

Applications

Tested Applications: WB, ELISA	Positive Controls: WB : human milk, human plasma, human placenta
Species Specificity: human	

Background Information

The gamma chain of complement component 8 (C8G) is one of three different subunits (alpha, beta, and gamma) of the eighth complement component (C8), which is a component of the MAC (membrane attack complex) (PMID:33382892). Although the roles of C8A and C8B are directly associated with MAC formation, C8G is not essential in the assembly and activity of the MAC (PMID:11960635). Moreover, C8G was shown to inhibit neuroinflammation by interfering with the sphingosine-1-phosphate (S1P)-S1PR2 interaction (PMID:34149451).

Storage

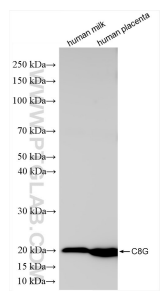
Storage:
Store at -20°C. Stable for one year after shipment.
Storage Buffer:
PBS with 0.02% sodium azide and 50% glycerol, pH7.3
Aliquoting is unnecessary for -20°C storage

*** 20ul sizes contain 0.1% BSA

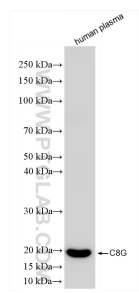
For technical support and original validation data for this product please contact:
T: 1 (888) 4PTGLAB (1-888-478-4522) (toll free in USA), or 1(312) 455-8498 (outside USA)
E: proteintech@ptglab.com
W: ptglab.com

This product is exclusively available under Proteintech Group brand and is not available to purchase from any other manufacturer.

Selected Validation Data



Various lysates were subjected to SDS PAGE followed by western blot with 85652-1-RR (C8G antibody) at dilution of 1:1000 incubated at room temperature for 1.5 hours.



human plasma were subjected to SDS PAGE followed by western blot with 85652-1-RR (C8G antibody) at dilution of 1:1000 incubated at room temperature for 1.5 hours.