

For Research Use Only

# SCGB2A2 Recombinant antibody, PBS Only (Capture)

Catalog Number: 85657-3-PBS



## Basic Information

### Catalog Number:

85657-3-PBS

### Size:

100ug, Concentration: 1 mg/ml by Nanodrop;

### Source:

Rabbit

### Isotype:

IgG

### GenBank Accession Number:

NM\_002411.3

### GeneID (NCBI):

4250

### UNIPROT ID:

Q13296-1

### Full Name:

secretoglobin, family 2A, member 2

### Calculated MW:

10 kDa

### Purification Method:

Protein A purification

### CloneNo.:

243101A9

## Applications

### Tested Applications:

Cytometric bead array, Sandwich ELISA, Indirect ELISA, Sample test

### Species Specificity:

human

## Product Information

85657-3-PBS targets SCGB2A2 as part of a matched antibody pair:

MP02024-2: 85657-3-PBS capture and 85657-2-PBS detection (validated in Cytometric bead array)

MP02024-3: 85657-3-PBS capture and 85657-4-PBS detection (validated in Sandwich ELISA)

Unconjugated rabbit recombinant monoclonal antibody in PBS only (BSA and azide free) storage buffer at a concentration of 1 mg/mL, ready for conjugation. Created using Proteintech's proprietary in-house recombinant technology. Recombinant production enables unrivalled batch-to-batch consistency, easy scale-up, and future security of supply.

This conjugation ready format makes antibodies ideal for use in many applications including: ELISAs, multiplex assays requiring matched pairs, mass cytometry, and multiplex imaging applications. Antibody use should be optimized by the end user for each application and assay.

## Storage

### Storage:

Store at -80°C.

### Storage Buffer:

PBS Only

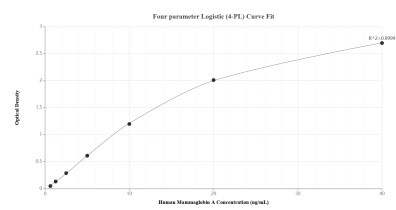
For technical support and original validation data for this product please contact:

T: 1 (888) 4PTGLAB (1-888-478-4522) (toll free in USA), or 1(312) 455-8498 (outside USA)

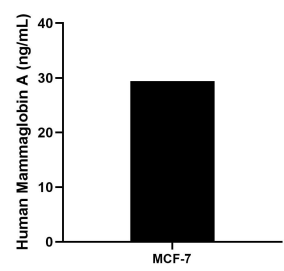
E: [proteintech@ptglab.com](mailto:proteintech@ptglab.com)  
W: [ptglab.com](http://ptglab.com)

This product is exclusively available under Proteintech Group brand and is not available to purchase from any other manufacturer.

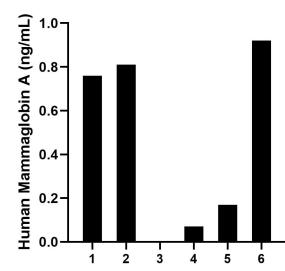
## Selected Validation Data



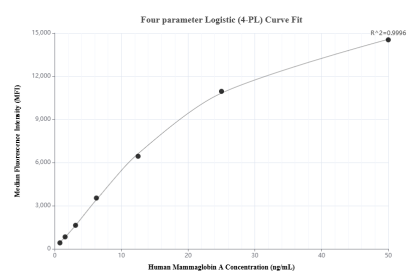
Sandwich ELISA standard curve of MP02024-3, Human Mammaglobin A Recombinant Matched Antibody Pair - PBS only. 85657-3-PBS was coated to a plate as the capture antibody and incubated with serial dilutions of standard Eg2887. 85657-4-PBS was HRP conjugated as the detection antibody. Range: 0.625-40 ng/mL.



The mean Mammaglobin A concentration was determined to be 29.40 ng/mL in MCF-7 cell extract based on a 3.50 mg/mL extract load.



Serum of six individual healthy human donors was measured. The Mammaglobin A concentration of detected samples was determined to be 0.46 ng/mL with a range of ND-0.92 ng/mL.



Cytometric bead array standard curve of MP02024-2, Mammaglobin A Recombinant Matched Antibody Pair, PBS Only. Capture antibody: 85657-3-PBS. Detection antibody: 85657-2-PBS. Standard: Eg2887. Range: 0.781-50 ng/mL.