

For Research Use Only

# Mammaglobin A Recombinant antibody, PBS Only

Catalog Number: 85657-5-PBS



## Basic Information

<b>Catalog Number:</b> 85657-5-PBS	<b>GenBank Accession Number:</b> NM_002411.3	<b>Purification Method:</b> Protein A purification
<b>Size:</b> 100ug , Concentration: 1 mg/ml by Nanodrop;	<b>GeneID (NCBI):</b> 4250	<b>CloneNo.:</b> 243101F6
<b>Source:</b> Rabbit	<b>UNIPROT ID:</b> Q13296-1	
<b>Isotype:</b> IgG	<b>Full Name:</b> secretoglobin, family 2A, member 2	
<b>Immunogen Catalog Number:</b> EG2887	<b>Calculated MW:</b> 10 kDa	

## Applications

**Tested Applications:**  
WB, Indirect ELISA

**Species Specificity:**  
human

## Background Information

SCGB2A2, also known as mammaglobin A, is a member of the secretoglobin superfamily. It is a breast cancer-associated antigen almost exclusively over-expressed in primary and metastatic human breast cancers, making it a specific molecular marker and a potential therapeutic target for breast cancer. SCGB2A2 is a 93-amino acid protein with a calculated molecular weight of 10.5 kDa.

## Storage

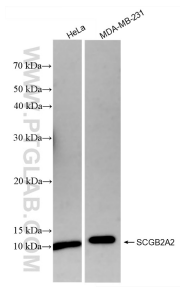
**Storage:**  
Store at -80°C.

**Storage Buffer:**  
PBS only, pH7.3

For technical support and original validation data for this product please contact:  
T: 1 (888) 4PTGLAB (1-888-478-4522) (toll free in USA), or 1(312) 455-8498 (outside USA)  
E: [proteintech@ptglab.com](mailto:proteintech@ptglab.com)  
W: [ptglab.com](http://ptglab.com)

This product is exclusively available under Proteintech Group brand and is not available to purchase from any other manufacturer.

## Selected Validation Data



Various lysates were subjected to SDS PAGE followed by western blot with 85657-5-RR (SCGB2A2 antibody) at dilution of 1:5000 incubated at room temperature for 1.5 hours. This data was developed using the same antibody clone with 85657-5-PBS in a different storage buffer formulation.