

For Research Use Only

Mouse Complement Component C5a Recombinant antibody, PBS Only (Capture)

Catalog Number: 85659-4-PBS



Basic Information

Catalog Number: 85659-4-PBS	GenBank Accession Number: NM_010406.2	Purification Method: Protein A purification
Size: 100ug , Concentration: 1 mg/ml by Nanodrop;	GeneID (NCBI): 15139	CloneNo.: 242757H6
Source: Rabbit	UNIPROT ID: P06684	
Isotype: IgG	Full Name: hemolytic complement	
	Calculated MW: 189kDa	

Applications

Tested Applications:
Cytometric bead array, Sandwich ELISA, Indirect ELISA,
Sample test

Species Specificity:
mouse

Product Information

85659-4-PBS targets Complement Component C5a as part of a matched antibody pair:

MP02047-2: 85659-4-PBS capture and 85659-3-PBS detection (validated in Cytometric bead array, Sandwich ELISA)

Unconjugated rabbit recombinant monoclonal antibody in PBS only (BSA and azide free) storage buffer at a concentration of 1 mg/mL, ready for conjugation. Created using Proteintech's proprietary in-house recombinant technology. Recombinant production enables unrivalled batch-to-batch consistency, easy scale-up, and future security of supply.

This conjugation ready format makes antibodies ideal for use in many applications including: ELISAs, multiplex assays requiring matched pairs, mass cytometry, and multiplex imaging applications. Antibody use should be optimized by the end user for each application and assay.

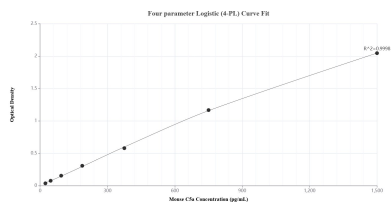
Storage

Storage:
Store at -80°C.
Storage Buffer:
PBS Only

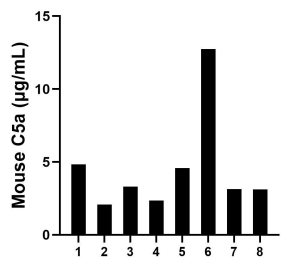
For technical support and original validation data for this product please contact:
T: 1 (888) 4PTGLAB (1-888-478-4522) (toll free in USA), or 1(312) 455-8498 (outside USA)
E: proteintech@ptglab.com
W: ptglab.com

This product is exclusively available under Proteintech Group brand and is not available to purchase from any other manufacturer.

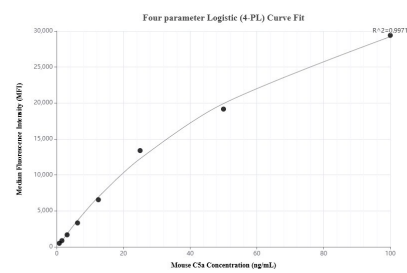
Selected Validation Data



Sandwich ELISA standard curve of MP02047-2, Mouse C5a Recombinant Matched Antibody Pair - PBS only. 85659-4-PBS was coated to a plate as the capture antibody and incubated with serial dilutions of standard Eg3332. 85659-3-PBS was HRP conjugated as the detection antibody. Range: 23.4-1500 pg/mL



Serum of eight mice was measured. The C5a concentration of detected samples was determined to be 4.5 µg/mL with a range of 2.1-12.8 µg/mL



Cytometric bead array standard curve of MP02047-2, MOUSE C5a Recombinant Matched Antibody Pair, PBS Only. Capture antibody: 85659-4-PBS. Detection antibody: 85659-3-PBS. Standard: Eg3332. Range: 0.781-100 ng/mL