

For Research Use Only

Mouse IL-12 R beta 1 Recombinant antibody, PBS Only (Detector)

Catalog Number: 85661-3-PBS



Basic Information

Catalog Number: 85661-3-PBS	GenBank Accession Number: NM_008353.2	Purification Method: Protein A purification
Size: 100ug , Concentration: 1 mg/ml by Nanodrop;	GeneID (NCBI): 16161	CloneNo.: 243021F7
Source: Rabbit	UNIPROT ID: Q60837	
Isotype: IgG	Full Name: interleukin 12 receptor, beta 1	
	Calculated MW: 82 kDa	

Applications

Tested Applications:
Cytometric bead array, Sandwich ELISA, Indirect ELISA, Sample test

Species Specificity:
mouse

Product Information

85661-3-PBS targets IL-12 R beta 1 as part of a matched antibody pair:

MP02048-1: 85661-4-PBS capture and 85661-3-PBS detection (validated in Cytometric bead array, Sandwich ELISA)

Unconjugated rabbit recombinant monoclonal antibody in PBS only (BSA and azide free) storage buffer at a concentration of 1 mg/mL, ready for conjugation. Created using Proteintech's proprietary in-house recombinant technology. Recombinant production enables unrivalled batch-to-batch consistency, easy scale-up, and future security of supply.

This conjugation ready format makes antibodies ideal for use in many applications including: ELISAs, multiplex assays requiring matched pairs, mass cytometry, and multiplex imaging applications. Antibody use should be optimized by the end user for each application and assay.

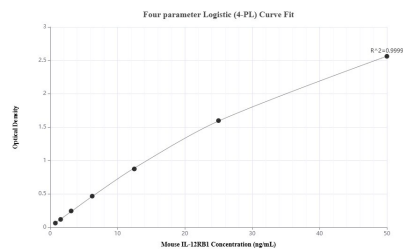
Storage

Storage:
Store at -80°C.
Storage Buffer:
PBS Only

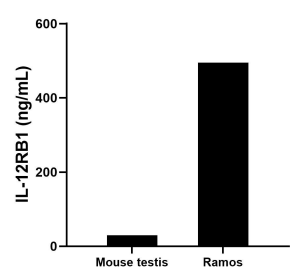
For technical support and original validation data for this product please contact:
T: 1 (888) 4PTGLAB (1-888-478-4522) (toll free in USA), or 1(312) 455-8498 (outside USA)
E: proteintech@ptglab.com
W: ptglab.com

This product is exclusively available under Proteintech Group brand and is not available to purchase from any other manufacturer.

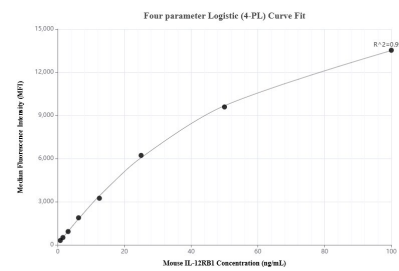
Selected Validation Data



Sandwich ELISA standard curve of MP02048-1, Mouse IL-12RB1 Recombinant Matched Antibody Pair - PBS only. 85661-4-PBS was coated to a plate as the capture antibody and incubated with serial dilutions of standard Eg3196. 85661-3-PBS was HRP conjugated as the detection antibody. Range: 0.781-50 ng/mL



The mean IL-12RB1 concentration was determined to be 29.82 ng/mL in mouse testis tissue extract based on a 1.1 mg/mL extract load and 495.17 ng/mL in Ramos cell extract based on a 1.4 mg/mL extract load.



Cytometric bead array standard curve of MP02048-1, MOUSE IL-12RB1 Recombinant Matched Antibody Pair, PBS Only. Capture antibody: 85661-4-PBS. Detection antibody: 85661-3-PBS. Standard: Eg3196. Range: 0.781-100 ng/mL