

For Research Use Only

# Mouse IL-12 R beta 1 Recombinant antibody, PBS Only (Capture)

Catalog Number: 85661-4-PBS



## Basic Information

|   |  |   |
|---|--|---|
| <b>Catalog Number:</b><br>85661-4-PBS                       | <b>GenBank Accession Number:</b><br>NM_008353.2      | <b>Purification Method:</b><br>Protein A purification |
| <b>Size:</b><br>100ug , Concentration: 1 mg/ml by Nanodrop; | <b>GeneID (NCBI):</b><br>16161                       | <b>CloneNo.:</b><br>243021C4                          |
| <b>Source:</b><br>Rabbit                                    | <b>UNIPROT ID:</b><br>Q60837                         |   |
| <b>Isotype:</b><br>IgG                                      | <b>Full Name:</b><br>interleukin 12 receptor, beta 1 |   |
|   | <b>Calculated MW:</b><br>82 kDa                      |   |

## Applications

**Tested Applications:**  
Cytometric bead array, Sandwich ELISA, Indirect ELISA, Sample test

**Species Specificity:**  
mouse

## Product Information

85661-4-PBS targets IL-12 R beta 1 as part of a matched antibody pair:

MP02048-1: 85661-4-PBS capture and 85661-3-PBS detection (validated in Cytometric bead array, Sandwich ELISA)

Unconjugated rabbit recombinant monoclonal antibody in PBS only (BSA and azide free) storage buffer at a concentration of 1 mg/mL, ready for conjugation. Created using Proteintech's proprietary in-house recombinant technology. Recombinant production enables unrivalled batch-to-batch consistency, easy scale-up, and future security of supply.

This conjugation ready format makes antibodies ideal for use in many applications including: ELISAs, multiplex assays requiring matched pairs, mass cytometry, and multiplex imaging applications. Antibody use should be optimized by the end user for each application and assay.

## Storage

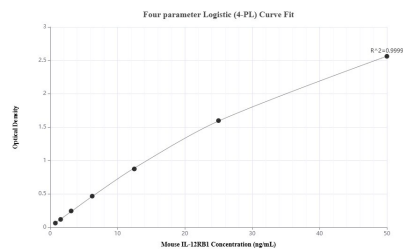
**Storage:**  
Store at -80°C.

**Storage Buffer:**  
PBS Only

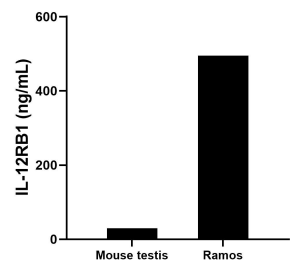
For technical support and original validation data for this product please contact:  
T: 1 (888) 4PTGLAB (1-888-478-4522) (toll free in USA), or 1(312) 455-8498 (outside USA)  
E: [proteintech@ptglab.com](mailto:proteintech@ptglab.com)  
W: [ptglab.com](http://ptglab.com)

This product is exclusively available under Proteintech Group brand and is not available to purchase from any other manufacturer.

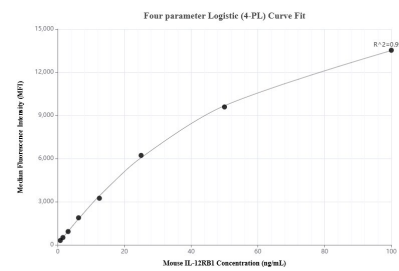
## Selected Validation Data



Sandwich ELISA standard curve of MP02048-1, Mouse IL-12RB1 Recombinant Matched Antibody Pair - PBS only. 85661-4-PBS was coated to a plate as the capture antibody and incubated with serial dilutions of standard Eg3196. 85661-3-PBS was HRP conjugated as the detection antibody. Range: 0.781-50 ng/mL



The mean IL-12RB1 concentration was determined to be 29.82 ng/mL in mouse testis tissue extract based on a 1.1 mg/mL extract load and 495.17 ng/mL in Ramos cell extract based on a 1.4 mg/mL extract load.



Cytometric bead array standard curve of MP02048-1, MOUSE IL-12RB1 Recombinant Matched Antibody Pair, PBS Only. Capture antibody: 85661-4-PBS. Detection antibody: 85661-3-PBS. Standard: Eg3196. Range: 0.781-100 ng/mL