

For Research Use Only

SKP2 Recombinant antibody

Catalog Number: 85670-4-RR



Basic Information

Catalog Number: 85670-4-RR	GenBank Accession Number: BC001441	Purification Method: Protein A purification
Size: 100ul , Concentration: 1000 µg/ml by Nanodrop;	GeneID (NCBI): 6502	CloneNo.: 243080H6
Source: Rabbit	UNIPROT ID: Q13309	Recommended Dilutions: WB 1:5000-1:50000
Isotype: IgG	Full Name: S-phase kinase-associated protein 2 (p45)	IF/ICC 1:250-1:1000
Immunogen Catalog Number: AG6826	Calculated MW: 48 kDa	
	Observed MW: 48 kDa, 46 kDa	

Applications

Tested Applications: WB, IF/ICC, ELISA	Positive Controls:
Species Specificity: human	WB : HEK-293 cells, Jurkat cells, K-562 cells
	IF/ICC : HepG2 cells,

Background Information

SKP2(S-phase kinase-associated protein 2) is also named as FBXL1 and belongs to the F-box family. It regulates cellular proliferation by targeting several cell cycle-regulated proteins for ubiquitination and degradation, including cyclin-dependent kinase inhibitor CDKN1B(PMID:22200179). The acetylation of SKP2 in the nuclear localization signal (NLS) can promote its cytoplasmic retention, and cytoplasmic SKP2 enhances cellular migration through ubiquitination and destruction of CDH. This protein has 3 isoforms produced by alternative splicing (PMID:26497688, PMID:16902410).

Storage

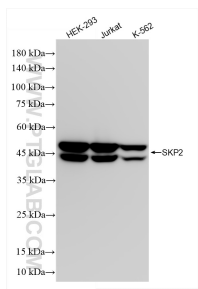
Storage:
Store at -20°C. Stable for one year after shipment.
Storage Buffer:
PBS with 0.02% sodium azide and 50% glycerol pH 7.3.
Aliquoting is unnecessary for -20°C storage

*** 20ul sizes contain 0.1% BSA

For technical support and original validation data for this product please contact:
T: 1 (888) 4PTGLAB (1-888-478-4522) (toll free in USA), or 1(312) 455-8498 (outside USA)
E: proteintech@ptglab.com
W: ptglab.com

This product is exclusively available under Proteintech Group brand and is not available to purchase from any other manufacturer.

Selected Validation Data



Immunofluorescent analysis of (4% PFA) fixed HepG2 cells using SKP2 antibody (85670-4-RR, Clone: 243080H6) at dilution of 1:500 and CoraLite® 488-Conjugated Goat Anti-Rabbit IgG(H+L) (SA00013-2), CL594-Phalloidin (red).

Various lysates were subjected to SDS PAGE followed by western blot with 85670-4-RR (SKP2 antibody) at dilution of 1:10000 incubated at room temperature for 1.5 hours.