

For Research Use Only

# Mouse IL-15RA Recombinant antibody, PBS Only (Detector)

Catalog Number: 85671-2-PBS



## Basic Information

<b>Catalog Number:</b> 85671-2-PBS	<b>GenBank Accession Number:</b> NM_008358.2	<b>Purification Method:</b> Protein A purification
<b>Size:</b> 100ug, Concentration: 1 mg/ml by Nanodrop;	<b>GeneID (NCBI):</b> 16169	<b>CloneNo.:</b> 242618H6
<b>Source:</b> Rabbit	<b>UNIPROT ID:</b> Q60819-1	
<b>Isotype:</b> IgG	<b>Full Name:</b> interleukin 15 receptor, alpha chain	
<b>Immunogen Catalog Number:</b> EG2687	<b>Calculated MW:</b> 28 kDa	
	<b>Observed MW:</b> 60 kDa	

## Applications

**Tested Applications:**  
WB, Cytometric bead array, Sandwich ELISA, Indirect  
ELISA, Sample test

**Species Specificity:**  
mouse, rat

## Product Information

85671-2-PBS targets IL-15RA as part of a matched antibody pair:

MP02016-1: 98406-2-PBS capture and 85671-2-PBS detection (validated in Cytometric bead array)

MP02016-3: 85671-4-PBS capture and 85671-2-PBS detection (validated in Sandwich ELISA)

Unconjugated rabbit recombinant monoclonal antibody in PBS only (BSA and azide free) storage buffer at a concentration of 1 mg/mL, ready for conjugation. Created using Proteintech's proprietary in-house recombinant technology. Recombinant production enables unrivalled batch-to-batch consistency, easy scale-up, and future security of supply.

This conjugation ready format makes antibodies ideal for use in many applications including: ELISAs, multiplex assays requiring matched pairs, mass cytometry, and multiplex imaging applications. Antibody use should be optimized by the end user for each application and assay.

## Background Information

Interleukin-15 (IL-15) is a pleiotropic cytokine that plays an important role in both innate and adaptive immunity. IL-15 is mainly produced by activated monocytes, macrophages and dendritic cells, and is structurally similar to IL-2 (PMID: 8178155; 12401478). These two cytokines share the same IL-2/15R $\beta$  and common  $\gamma$ -chain receptor subunits. In addition, IL-2 and IL-15 have their own private  $\alpha$ -chain receptor subunit, IL-2R $\alpha$  and IL-15R $\alpha$ , respectively (PMID: 7641685). The IL-15R $\alpha$  chain is expressed by many cell types including monocytes, DCs, NK, T cells and fibroblasts. Several isoforms of IL-15R $\alpha$  exist and are generated either by alternative splicing or by proteolytic cleavage (PMID: 10480910; 15265897). The calculated molecular weight of full-length IL-15R $\alpha$  is 28 kDa, IL-15R $\alpha$  can be glycosylated, and larger apparent molecular weights of 55-65 kDa have been reported by some researches (PMID: 10480910; 15976182; 15671076; 17912462).

## Storage

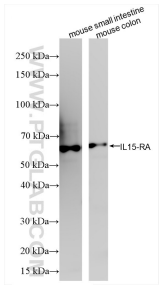
**Storage:**  
Store at -80°C.

**Storage Buffer:**  
PBS only, pH7.3

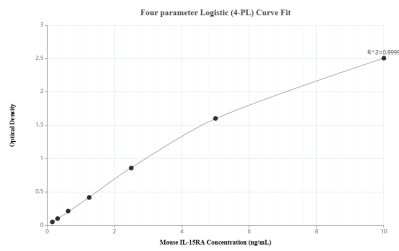
For technical support and original validation data for this product please contact:  
T: 1 (888) 4PTGLAB (1-888-478-4522) (toll free in USA), or 1(312) 455-8498 (outside USA)  
E: [proteintech@ptglab.com](mailto:proteintech@ptglab.com)  
W: [ptglab.com](http://ptglab.com)

This product is exclusively available under Proteintech Group brand and is not available to purchase from any other manufacturer.

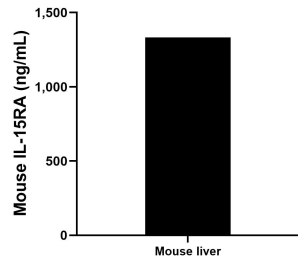
Selected Validation Data



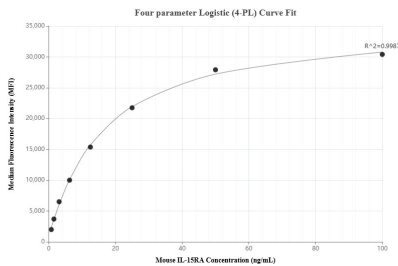
Various lysates were subjected to SDS PAGE followed by western blot with 85671-2-RR (IL15ra antibody) at dilution of 1:10000 incubated at room temperature for 1.5 hours. This data was developed using the same antibody clone with 85671-2-PBS in a different storage buffer formulation.



Sandwich ELISA standard curve of MP02016-3, Mouse IL-15RA Recombinant Matched Antibody Pair - PBS only. 85671-4-PBS was coated to a plate as the capture antibody and incubated with serial dilutions of standard Eg2687. 85671-2-PBS was HRP conjugated as the detection antibody. Range: 0.156-10 ng/mL



The mean IL-15RA concentration was determined to be 1,332.06 ng/mL in mouse liver tissue extract based on a 3.7 mg/mL extract load.



Cytometric bead array standard curve of MP02016-1, MOUSE IL-15RA Recombinant Matched Antibody Pair, PBS Only. Capture antibody: 98406-2-PBS. Detection antibody: 85671-2-PBS. Standard: Eg2687. Range: 0.781-100 ng/mL