

For Research Use Only

Mouse Il15ra Recombinant antibody, PBS Only (Capture)

Catalog Number: 85671-4-PBS



Basic Information

Catalog Number: 85671-4-PBS	GenBank Accession Number: NM_008358.2	Purification Method: Protein A purification
Size: 100ug , Concentration: 1 mg/ml by Nanodrop;	GeneID (NCBI): 16169	CloneNo.: 242618G11
Source: Rabbit	UNIPROT ID: Q60819-1	
Isotype: IgG	Full Name: interleukin 15 receptor, alpha chain	
	Calculated MW: 28 kDa	

Applications

Tested Applications:
Sandwich ELISA, Indirect ELISA, Sample test

Species Specificity:
mouse

Product Information

85671-4-PBS targets Il15ra as part of a matched antibody pair:

MP02016-3: 85671-4-PBS capture and 85671-2-PBS detection (validated in Sandwich ELISA)

Unconjugated rabbit recombinant monoclonal antibody in PBS only (BSA and azide free) storage buffer at a concentration of 1 mg/mL, ready for conjugation. Created using Proteintech's proprietary in-house recombinant technology. Recombinant production enables unrivalled batch-to-batch consistency, easy scale-up, and future security of supply.

This conjugation ready format makes antibodies ideal for use in many applications including: ELISAs, multiplex assays requiring matched pairs, mass cytometry, and multiplex imaging applications. Antibody use should be optimized by the end user for each application and assay.

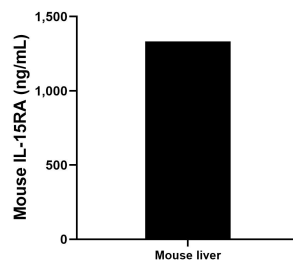
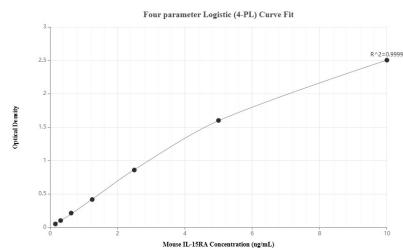
Storage

Storage:
Store at -80°C.
Storage Buffer:
PBS Only

For technical support and original validation data for this product please contact:
T: 1 (888) 4PTGLAB (1-888-478-4522) (toll free in USA), or 1(312) 455-8498 (outside USA)
E: proteintech@ptglab.com
W: ptglab.com

This product is exclusively available under Proteintech Group brand and is not available to purchase from any other manufacturer.

Selected Validation Data



Sandwich ELISA standard curve of MP02016-3, Mouse IL-15RA Recombinant Matched Antibody Pair - PBS only. 85671-4-PBS was coated to a plate as the capture antibody and incubated with serial dilutions of standard Eg2687. 85671-2-PBS was HRP conjugated as the detection antibody. Range: 0.156-10 ng/mL

The mean IL-15RA concentration was determined to be 1,332.06 ng/mL in mouse liver tissue extract based on a 3.7 mg/mL extract load.